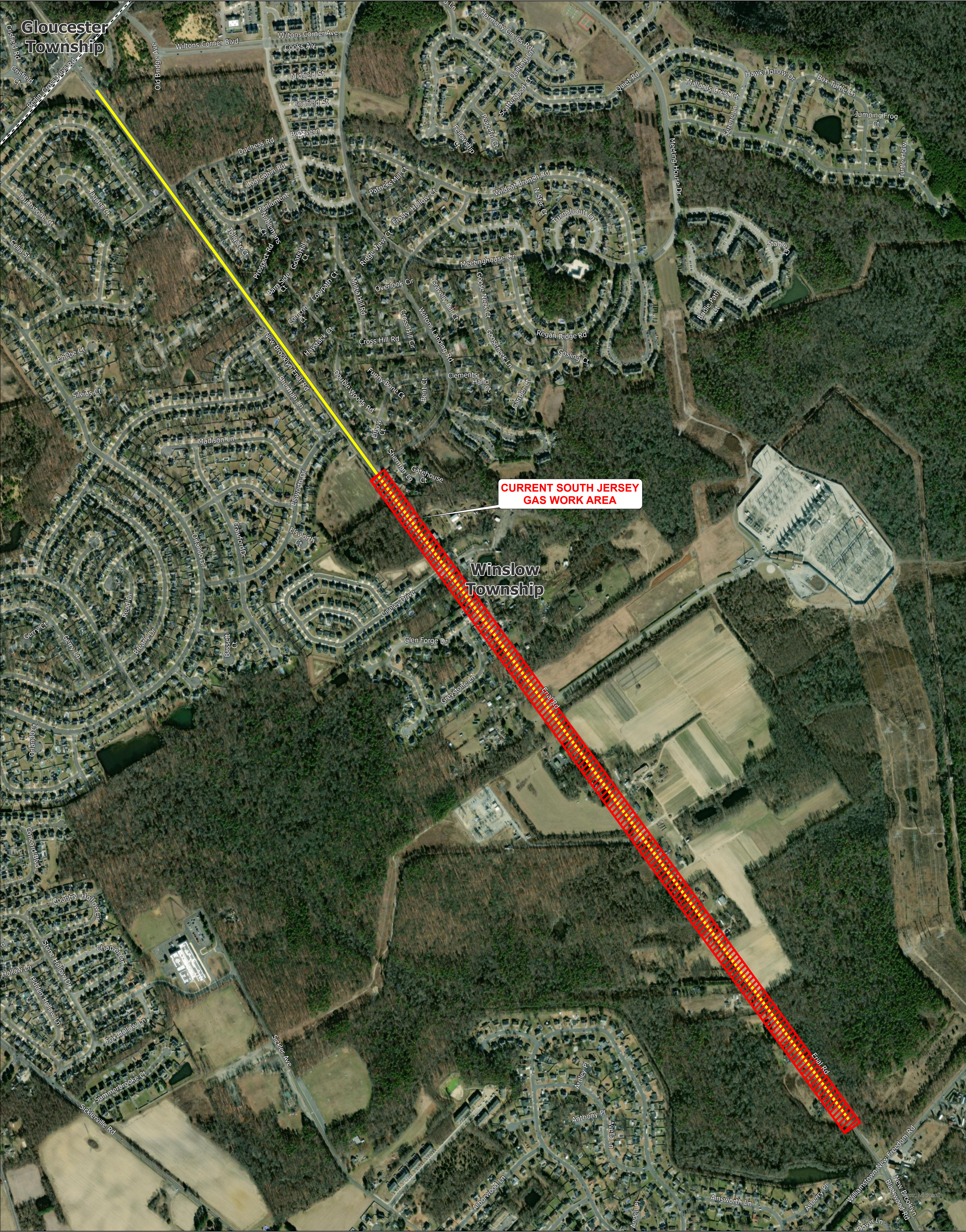


# Lawnside III - Aerial Route Plan for New Brooklyn Erial Road



<div><div><div></div></div><div>Current Work Area</div></div> <div><div><div></div></div><div>Pipeline Route</div></div> <div><div><div></div></div><div>Municipality Boundary</div></div>	<div><div><div>N</div><div></div></div><div>00.10.20.3Miles</div><div>1 inch equals 0.1 miles</div></div>
	<div><div><div></div><div>SOUTH JERSEY</div><div>GAS®</div></div></div>
	<div><div>Page 1 of 1</div><div>10/5/2023</div></div>

This map was generated from South Jersey Industries Geographic Information System (GIS). This map and its contained data are for demonstration purposes only and were not developed in accordance with National Map Accuracy Standards. Any use of this product with respect to accuracy and precision shall be the sole responsibility of the user. These map services and data were developed, in part, using New Jersey Department of Environmental Protection Geographic Information System (GIS) digital data, in conjunction with the State of New Jersey's Office of Information Technology. These secondary products have not been verified by NJDEP and are not authorized by the State of New Jersey. The geodetic accuracy and precision of the GIS data contained in these maps and services have not been developed nor verified by a professional licensed land surveyor and shall not be, nor are they intended to be used in matters requiring delineation and location of true ground horizontal and/or vertical controls. Measure based functions should include a form of distance verification. This map shall not be replicated without SJTI approval.