



520 Green Lane
Union, NJ 07083

T: (908) 662-8448
F: (908) 662-8496

dfranco@sjindustries.com

Deborah M. Franco, Esq.
VP, Clean Energy and Sustainability

September 21, 2020

Electronic Filing

Aida Camacho-Welch
Office of the Secretary
NJ Board of Public Utilities
44 South Clinton Avenue, 3rd Floor
P. O. Box 350
Trenton, NJ 08625-0350

**Re: In the Matter of the Petition of South Jersey Gas Company for Authorization to Construct and Operate a 16-Inch Pipeline Pursuant to N.J.A.C. 14:7-1.4 Camden County Reliability Project Phase II
BPU Docket No. _____**

Dear Secretary Camacho-Welch:

Enclosed, please find copies of South Jersey Gas Company's Petition and Schedules in the referenced matter, which have been filed electronically today through the Board's e-filing program. Due to the pandemic, and in accordance with the New Jersey Board of Public Utilities ("BPU") March 19, 2020 and May 20, 2020 Orders issued in BPU Docket No. EO20030254, hard copies are not being provided at this time, but can be provided at a later time, as needed.

Please do not hesitate to contact me with any questions you may have. Thank you for your attention to this matter.

Respectfully submitted,

A handwritten signature in dark ink, appearing to read "Deborah M. Franco".

Deborah M. Franco, Esq.

DMF:caj
Enclosures

cc: James Guiliano, Director, Division of Reliability & Security (BPU)
Stacy Peterson, Director, Division of Energy (BPU)
Stefanie A. Brand, Esq., Director (Division of Rate Counsel)
Terel Klein, Esq. (Department of Law)

STATE OF NEW JERSEY
BOARD OF PUBLIC UTILITIES

IN THE MATTER OF THE PETITION	:	PETITION
OF SOUTH JERSEY GAS COMPANY	:	
FOR AUTHORIZATION TO CONSTRUCT	:	DOCKET NO.
AND OPERATE A 16-INCH	:	
PIPELINE PURSUANT TO <u>N.J.A.C. 14:7-1.4</u>	:	
CAMDEN COUNTY RELIABILITY PROJECT	:	
PHASE II	:	

PETITION AND EXHIBITS

Deborah M. Franco, Esq.
Vice President, Clean Energy
& Sustainability
SJI
520 Green Lane
Union, NJ 07083
908-662-8448

September 18, 2020

STATE OF NEW JERSEY
BOARD OF PUBLIC UTILITIES

IN THE MATTER OF THE PETITION	:	PETITION
OF SOUTH JERSEY GAS COMPANY	:	
FOR AUTHORIZATION TO CONSTRUCT	:	DOCKET NO.
AND OPERATE A 16-INCH	:	
PIPELINE PURSUANT TO <u>N.J.A.C. 14:7-1.4</u>	:	

TO THE HONORABLE COMMISSIONERS OF THE BOARD OF PUBLIC UTILITIES

South Jersey Gas Company (“South Jersey”, “Petitioner”, or the “Company”), a public utility corporation of the State of New Jersey with its principal office at One South Jersey Place, Atlantic City, New Jersey, petitions this Honorable Board (the “Board”) for authority pursuant to N.J.A.C. 14:7-1.4 to initiate construction of a pipeline refurbishment project necessary to ensure adequate gas delivery pressure on peak design days to serve the Camden and Burlington County portions of South Jersey’s gas distribution system. Specifically, the Company is proposing to install a new, approximately seven mile, 16-inch diameter natural gas pipeline with an alignment that runs through Camden County, New Jersey (the “Project”). South Jersey anticipates initiating construction of the Project during the early Second Quarter of 2021 with a completion date of October 1st, 2022. The Project passes through three municipalities along municipal and county road rights-of-way commencing in the Borough of Pine Hill and ending in the Township of Winslow. The pipeline will be designed, constructed, tested and certified for a maximum allowable operating pressure (“MAOP”) of 600 psig. A detailed description of the Project technical design specifications is attached hereto as Exhibit “A”. In support of this Petition, South Jersey states as follows:

I. BACKGROUND

1. South Jersey is engaged in the transmission, distribution, transportation, and sale of natural gas within its defined service territory within the State of New Jersey. South Jersey's service territory includes all or portions of the following counties: Atlantic, Burlington, Camden, Cape May, Cumberland, Gloucester and Salem. Within its service territory, South Jersey serves approximately 402,007 customers in 114 municipalities.

2. South Jersey is obligated to ensure that it is able to provide safe, adequate and proper natural gas service to meet the current and future demand needs within its defined service territory.

3. South Jersey's existing Lawnside pipeline commences at South Jersey's interconnection point with the Transcontinental Gas Pipeline Company, LLC ("Transco") in Lawnside, New Jersey and extends easterly, at varying diameters, to Pleasantville, New Jersey (the "Lawnside Line"). South Jersey was authorized to construct the Lawnside Line pursuant to an order dated June 30, 2017 issued in BPU Docket No. GO17030188 ("Lawnside Line Order")

4. The Lawnside Line includes a 12-inch gas distribution line with a MAOP (maximum allowable operating pressure) of 250 psig and serves the Camden and Burlington County portions of South Jersey's gas distribution system. In accordance with the Lawnside Line Order, for this distribution pipeline, South Jersey Gas follows the transmission pipeline requirements contained in the Federal pipeline safety regulation and the New Jersey Administrative Code.

5. South Jersey has determined through gas flow modeling that the existing Lawnside Line, which is limited by its size and operating pressure, is not, alone, able to

efficiently provide adequate gas delivery pressure to satisfy Camden and Burlington Counties' peak day demands.

6. Without adequate gas delivery pressures, localized operational constraints may occur requiring other parts of South Jersey's gas distribution system to partially flow gas towards the load constrained area.

7. In the initial phase of the effort to address the operational issues noted above, South Jersey replaced approximately 5 miles of 12-inch gas distribution line with a MAOP of 250 psig with 16-inch pipe with a MOAP of 600 psig, commencing from its Lawnside Gate Station and ending in the Borough of Pine Hill.

8. South Jersey has determined that the proposed Project is necessary to ensure adequate operating pressures to the localized area on even the coldest days; (and enable other parts of South Jersey's gas distribution system to operate as intended to satisfy customer demands throughout South Jersey's service areas).

II. THE NEED FOR THE PROJECT

9. South Jersey has the obligation to serve its firm customers under all load conditions. Thus, the Company's Lawnside Line deliverability constraints need to be resolved in a manner that enhances South Jersey's overall system reliability.

10. As of December 31, 2019, the Company operates a network of 146.3 miles of transmission pipelines, 6,684 miles of distribution mains, and 322,000 service lines that total 5,732.5 miles in length. Gas supply is delivered into the Company's system by Transco and Columbia Gas Transmission, LLC ("Columbia") through Seven (7) City Gate Stations located along the northern and western edge of the Company's service territory. The Company's

Lawnside City Gate Station represents the second largest volumetric delivery point with Transco on South Jersey's system.

11. Based on hydraulic modeling of gas flows conducted by South Jersey for a 2021-2022 design day, a portion of the existing 12-inch, 250 psig Lawnside Line was found to be inadequate, without the assistance of back feed from other South Jersey trunk lines, to serve the needs of Camden and Burlington Counties.

12. Modeling showed that on peak days, gas from the Company's Dutch Mill Road Line does not flow towards Atlantic County as the line was originally designed, but rather flows to the north and west to reinforce gas supply to the gas distribution systems serving Camden and Burlington Counties.

13. Additional gas supply is then drawn from South Jersey's southeast Atlantic County distribution system in order to supplement the gas from the Dutch Mill Road Line. Moreover, on a design day, the Company's New Century Line, which is the backbone of the Company's gas system, is burdened with additional gas load to feed systems in the east and southeast from Union Road Station, thereby supplementing the gas flow that should be coming from the Dutch Mill Road line but instead is being pulled to Burlington and Camden Counties.

14. Therefore, in order to ensure its overall system reliability, South Jersey must reinforce its distribution system to allow for adequate system pressures at design day conditions within all of the Company's delivery systems.

15. South Jersey has replaced approximately 5 miles of 12-inch gas distribution line with a MAOP of 250 psig with 16-inch pipe with a MAOP of 600 psig, commencing from its Lawnside Gate Station and ending in the Borough of Pine Hill.

16. Although South Jersey does not forecast customer loss on a design day in 2021, the Company's distribution system supplying Camden and Burlington Counties could experience decreased line pressures causing undue reliance and constraints in other areas of South Jersey's distribution system. The Project provides a much-needed solution to this problem.

17. The Project, as proposed, will enable South Jersey to continue to provide safe, adequate and reliable delivery of natural gas to its customers on even the coldest winter day. By increasing the supply capacity of natural gas from the Lawnside Gate Station into Camden and Burlington Counties, South Jersey reduces the risk of customer interruptions and removes the overall burden on the remainder of South Jersey's gas distribution system.

18. Moreover, the Project provides important added benefits to South Jersey customers including:

- **Improved system reliability** – The ability of South Jersey's gas system and/or its components to operate more effectively within limits so that potential instability, uncontrolled events, or cascading failures do not result in disturbances.
- **Improved system resiliency**-The ability of South Jersey's gas system and/or its components to better adapt to changing conditions to withstand and rapidly recover from disruptions.
- **Improved system integrity**-The ability of South Jersey's gas system and/or its components to better perform its intended functions without being degraded by changes or disruptions in internal and external environments.
- **Improved system flexibility**-The ability of South Jersey's overall gas distribution system to more effectively accommodate changes in service requirements and

operating conditions of the system at any point in time so that safe and reliable utility service will continue to be provided to customers.

- **Improved service quality**-The ability of South Jersey to deliver higher quality service to its gas customers.
- **Improved safety**-The ability of South Jersey to achieve a lower risk to life and health in the design, construction and operation of a gas distribution system by taking into account the magnitude of potential consequences, the probability of those consequences occurring, and the cost of risk management.

III. PROJECT SPECIFICATIONS

19. Pursuant to N.J.A.C. 14:7-1.18, this Petition constitutes notice to the Board setting forth the Project specifications. The Project will comply with all applicable Federal, State and local requirements as well as South Jersey's independent standards. Consistent with the requirements in the Lawnside Line Order, for this distribution pipeline Project South Jersey Gas will follow the transmission pipeline requirements contained in the Federal Pipeline safety regulations and the New Jersey Administrative Code.

20. The Project will commence in the Borough of Pine Hill and proceed through Gloucester Township, and end in the Winslow Township.

21. The Project will consist of 33,550 linear feet (approximately 6.3 miles) of 16-inch diameter natural gas pipeline. Of this total, 3,625 linear feet (11%) will pass through the Borough of Pine Hill, 18,400 linear feet (55%) will pass through the Gloucester Township and 11,525 linear feet (34%) will pass through Winslow Township, and the Project will terminate within Winslow Township. The entirety of the Project will be located in Camden County

through existing county and municipal road rights-of-way. An overview map of the Project, including the proposed route as well as detailed plan drawings are attached hereto as Exhibit “B”.

22. The Project pipeline will be constructed in accordance with N.J.A.C. 14:7-1.1 *et seq.* and the Federal Regulations applicable to Transportation of Natural and Other Gas by Pipeline, Part 192, Title 49 of the Code of Federal Regulations. Specifically, the pipeline material for open trench construction for this Project will be 16-inch diameter carbon steel welded pipe with 0.375-inch wall thickness. The pipeline material for Horizontal Directional Drilling (“HDD”) will also be 16-inch diameter. The 16-inch pipe will be manufactured in accordance with the applicable American Petroleum Institute (“API”) Standard 5L with SMYS of 65,000 psi and a minimum yield strength of 65,000 psi.

23. The 16-inch pipeline will primarily be externally coated with Powercrete, a pipeline coating of Fusion Bond Epoxy (14 mils) covered by an additional outer mechanical protective coating of Powercrete (40 mils) and protected against corrosion by an impressed current cathodic protection system. The pipeline will be subject to 100 percent non-destructive radiographic inspection testing on all field welds. Further detailed project specifications are included in Exhibit “A”.

24. The Project, which is designed for a Class 4 Location, will be designed and constructed in compliance with the requirements of N.J.A.C. 14:7-1.3 and 49 C.F.R. 192.150, including inspection accessibility and remote operating valves in accordance with 49 C.F.R. 192.935.

25. Pursuant to N.J.A.C. 14:7-1.14, post-construction but pre-service, the Project will be hydrostatically pressure tested to at least 900 psig for a 24-hour period in conformance with

all applicable Federal and State requirements. This will stress the 16-inch (.375 wall) pipe to 29.5% of SMYS. Certification of a successful post-construction hydrostatic pressure test will be submitted in compliance with N.J.A.C. 14:7-1.14 and 1.26.

26. The Project will be completely located within the public rights-of-way in roadways under the jurisdiction of the following municipalities and county:

- Camden County, 4.1 miles (65%)
 - Camden County Route 706
- Borough of Pine Hill, 0.7 miles (11%)
 - Little Mill Road
- Gloucester Township, 1.5 miles (24%)
 - Little Mill Road

27. South Jersey is prepared to begin construction at the start of the early second quarter of 2021 and complete the Project in October of 2022.

IV. APPROVALS

28. South Jersey is requesting Utility Highway Occupancy/Road Opening Permits from Camden County, Pine Hill and Gloucester Township.

29. South Jersey will submit an application for Certification of its Soil Erosion and Sediment Control Plan to the Camden County Soil Conservation District.

30. A Stormwater, General Permit 5G3 will be requested from the New Jersey Department of Environmental Protection (NJDEP).

31. South Jersey will seek local planning/zoning land use approvals, as needed, from the Borough of Pine Hill, Gloucester Township and Winslow Township for the proposed modification of the regulator stations in each of the respective municipalities.

32. South Jersey will be requesting authorization for the utilization of water from municipal hydrants for the post-construction hydrostatic pressure testing of the Project pipeline. A water quality analysis will be performed prior to discharging any test water. South Jersey will obtain a Clean Water Assurance Certification from NJDEP associated with its hydrostatic test water discharge.

V. ALTERNATIVES ANALYSIS

A. Route Alternatives

33. The Company analyzed three possible routes for the Project, as depicted on the map attached hereto as Exhibit “C,” including the following:

- **Route A: Little Mill Road and County Route 706**

- Approximately 174 occupied buildings are located within 100 feet of the Project alignment including:

- (1) Child Care Center
- (1) Fire Station

- **Route B: Blackwood Clementon Road, West Branch Avenue, Kearsley Road, Cross Keys Road, County Road 706**

- Approximately 237 occupied buildings are located within 100 feet of the Project alignment including:

- (2) Churches
- **Route C: College Drive, Camden County Route 706**
 - Approximately 321 occupied buildings are located within 100 feet of the Project alignment including:
 - Child Care Center
 - Church
 - Fire Station

34. Route A was selected as the best route for the Project due to fewer occupied buildings in close proximity to the pipeline and the shortest overall distance.

VI. PUBLIC PARTICIPATION

35. In anticipation of a public hearing to be held in the area of the Project, South Jersey has prepared a list depicting all structures within 100 feet of the Project's path, including the owners' names and addresses as well as block and lot numbers, distance from the Project, survey stations and references to alignment drawings. This list is attached hereto as Exhibit "D".

36. Once a public hearing is scheduled, South Jersey will publish notice of this Petition and of the public hearing in the Courier-Post newspaper and serve written notice of the public hearing upon owners of the properties identified in Exhibit "D".

37. A copy of the proposed form of public notice is attached hereto as Exhibit "E".

VII. APPROVAL FACTORS

38. The Project should be approved so that South Jersey can construct a necessary and important enhancement to its existing distribution system that will provide for the continued provision of safe and reliable gas service to its customers.

39. Additionally, the Project will enable future system enhancement upgrades that will continue to improve upon the Company's overall distribution system reliability.

VIII. REQUEST FOR EXPEDITED RELIEF

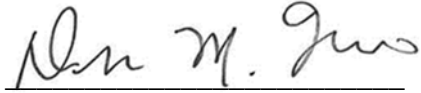
40. The Project is designed to provide necessary distribution system enhancements, including enhanced reliability, which will benefit SJG's customers in the immediate future and for years to come. In order to ensure that the Project is completed without delay and in advance of the 2021-2022 winter season, South Jersey respectfully requests expedited review of this Petition.

IX. CONCLUSION

For the reasons stated above, South Jersey requests that the Board:

- A. Retain jurisdiction over this matter and designate a Commissioner as Presiding Officer;
- B. Approve South Jersey's request to construct and operate the 6.3 mile, 16-inch pipeline in Camden County, as herein described;
- C. Approve South Jersey's request for expedited treatment; and
- D. Approve any other relief deemed just and equitable.

Respectfully,
South Jersey Gas Company

A handwritten signature in dark ink, appearing to read "Deborah A. Franco", written over a horizontal line.

By: Deborah A. Franco, Esq.
Vice President, Clean Energy
and Sustainability

Dated: September 18, 2020

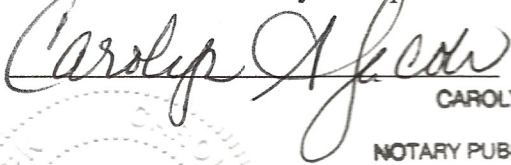
VERIFICATION

I, Brent W. Schomber, of full age, being fully sworn according to law to upon my oath,
depose and say:

1. I am employed by South Jersey Gas Company as Vice President of Operations.
2. I am authorized to make this Verification on behalf of South Jersey Gas Company.
3. I have reviewed the foregoing Petition and verify that the information contained therein is
true and correct to the best of my knowledge, information and belief.

18

Sworn to and subscribed
Before me this 18th day of September 2020



CAROLYN A. JACOBS

NOTARY PUBLIC OF NEW JERSEY

My Commission Expires October 28, 2023



Exhibit A

EXHIBIT A
SPECIFICATIONS AND CODE REQUIREMENTS

16" PIPELINE THROUGH BOROUGH OF PINE HILL, GLOUCESTER TOWNSHIP
AND WINSLOW TOWNSHIP IN CAMDEN COUNTY, NEW JERSEY

49 CFR PART 192 - Transportation of Natural Gas and Other Gas by Pipeline:
Minimum Federal Safety Standards

N.J.A.C. 14:7 Natural Gas Pipelines

Class Location -USDOT 192.5/NJAC 14:7-1.3

South Jersey Gas Company's Standard criteria is to design all pipelines for Class 4 locations. The design of the pipeline shall be for Class 4 locations and shall comply with NJAC 14:7-1.3. The actual class locations include Class 1 ,Class 2 and Class 3 as defined by USDOT 192.5.

16" PIPE INSTALLED VIA OPEN TRENCH

Pipe Specification -USDOT 192.55

The 16" pipe shall be API 5L, Grade X-65, electric resistance welded, 0.375" wall thickness.

Design Operating Pressure -USDOT 192.105

Class 4 Location (Design Criteria):

Design Factor	F = 0.40
Longitudinal Joint Factor	E = 1.0 (ERW)
Temperature Factor	T = 1.0 (250 degrees F. and less)
Min. Yield Strength	S = 65,000 psi

Design Pressure "P" for 16" Pipe (0.375 Wall)

Outside Diameter	D = 16.000"
Wall Thickness	t = 0.375"

Formula

$$P = \frac{2St}{D} \times F \times E \times T$$

$$P = \frac{2(65,000) \times (0.375)}{16} \times 0.40 \times 1.0 \times 1.0 = 1218.75 \text{ psig}$$

In accordance with API-5L table 26, the pipe was pressure tested to at least 2590 psig at the pipe mill. The Project Pipeline will be designed, constructed and certified to Class 4 requirements with a MAOP of 600 psig. The percent of yield strength at this pressure is:

Formula

$$\text{Operating Stress} = \frac{PD}{2t}$$

$$\text{Operating Stress (0.375 Wall)} = \frac{(600) \times (16)}{2(0.375)} = 12,800 \text{ psi}$$

$$\% \text{ Yield (0.375 Wall)} = \frac{12,800}{65,000} \times 100 = 19.69\% \text{ at MAOP}$$

16" PIPE INSTALLED VIA HORIZONTAL DIRECTIONAL DRILL

Pipe Specification -USDOT 192.55

The 16" pipe shall be API 5L, Grade X-65, electric resistance welded, 0.375" wall thickness.

Design Operating Pressure -USDOT 192.105

Class 4 Location (Design Criteria):

Design Factor	F = 0.40
Longitudinal Joint Factor	E = 1.0 (ERW)
Temperature Factor	T = 1.0 (250 degrees F. and less)
Min. Yield Strength	S = 65,000 psi

Design Pressure "P" for 16" Pipe (0.375 Wall)

Outside Diameter	D = 16.000"
Wall Thickness	t = 0.375"

Formula

$$P = \frac{2St}{D} \times F \times E \times T$$

$$P = \frac{2(65,000) \times (0.375)}{16} \times 0.40 \times 1.0 \times 1.0 = 1218.75 \text{ psig}$$

In accordance with API-5L table 26, the pipe was pressure tested to at least 2590 psig at the pipe mill. The Project Pipeline will be designed, constructed and certified to Class 4 requirements with a MAOP of 600 psig. The percent of yield strength at this pressure is:

Formula

$$\text{Operating Stress} = \frac{PD}{2t}$$

$$\text{Operating Stress (0.375 Wall)} = \frac{(600) \times (16)}{2(0.375)} = 12,800 \text{ psi}$$

$$\% \text{ Yield (0.375 Wall)} = \frac{12,800}{65,000} \times 100 = 19.69\% \text{ at MAOP}$$

Pipelines near Railroads and Highways – N.J.A.C. 14:7-1.8

The pipeline shall be designed in accordance with Conrail's CE-8 Specifications entitled "Specifications for Pipeline Occupancy of Consolidated Rail Corporation Property" where the pipeline intersects or runs parallel to a railroad. The pipeline shall be designed in accordance with Section 653 "Gas" of N.J.D.O.T.'s 2007 Standard Specifications for Road & Bridge Construction".

Projections – N.J.A.C. 14:7-1.13

All portions of the pipeline which protrude above the ground shall be conspicuously painted in accordance with the Steel Structures Painting Council's Paint Application Specification SSPC-PA 1-64 and enclosed and secured within a chain link fence.

Meter and Regulator Stations: Electric Installation – N.J.A.C. 14:7-1.15

All electric equipment and wiring in the meter, regulator and above ground valve facilities shall be designed and installed in accordance with the National Electrical Code and ANSI/NFPA 70.

Operator Reporting Requirements – N.J.A.C. 14:7-1.26

Pressure test records shall be submitted within one month after the test date and include the pressure and temperature recording charts, dead weight test records, other records of pressure and temperature readings and calibration records for recording instruments used during the pressure test.

Valve Specification -USDOT 192.145

All valves shall meet the minimum requirements of API 6D and South Jersey Gas Company specifications, which constitute a supplement to API 6D. All valves shall be ANSI 600-lb. Class. Each point on the pipeline shall be within 2 ½ miles of a sectionalizing block valve.

Pipe Flanges -USDOT 192.147

All pipe flanges shall be carbon steel weld neck 600-lb. R.F. ANSI B16.5, MSS SP-44, or equivalent.

Pipe Fittings -USDOT 192.149

Welding elbows shall be ANSI B16.9, ASTM A-234 WP91.

Welding tees shall be ANSI B16.9, ASTM A-234 WP91.

Welding caps shall be ANSI B16.9, ASTM A-234 WP91.

Welding reducers shall be ANSI B16.9, ASTM A-234 WP91 concentric type.

Each steel butt-welding fitting shall have pressure and temperature ratings based on stresses for pipe of the same or equivalent material. The actual bursting strength of the fitting shall at least equal the computed bursting strength of pipe of the designated material and wall thickness, as determined by a prototype that was tested to at least the pressure required for the pipeline.

Passage of Internal Inspection Devices -USDOT 192.150

The pipeline, valves and fittings shall accommodate the passage of internal inspection devices.

Fabricated Components -USDOT 192.153

All fabricated components shall be constructed using regularly manufactured butt-welding fittings.

Welded Branch Connection -USDOT 192.155/NJAC 14:7-1.7

Full-size and reduced-sized branch connections shall be fabricated using manufactured forged steel fittings such as weld-o-lets made by Bonney Forge or equivalent.

Supports and Anchors -USDOT 192.161

Underground piping shall be continuously supported by a firm graded trench bottom of consolidated undisturbed soil.

Carrier pipe entering or leaving a casing shall be continuously supported on thoroughly compacted soil.

All above ground pipe supports shall be made of non-combustible material and shall not be welded or firmly secured to the pipe.

Transmission Line Valves -USDOT 192.179/ NJAC 14:7-1.10

The pipeline shall have in-line valves installed at each end and valves at 5 mile intervals. The operating device to open or close the valve shall be readily accessible and protected from damage through an enclosed gear housing and roadbox extension assembly. Each section of the transmission line shall have a blow down valve with enough capacity allow the transmission line to be blown down as rapidly as practicable. The blowdown discharge shall be designed in accordance with USDOT 192.179.

Qualification of Welding Procedures -USDOT 192.225/NJAC 14:7-1.6

All welding procedures shall be qualified under API 1104.

Qualification of Welders -USDOT 192.227

All welders shall be qualified using procedures qualified under API 1104.

A written record shall be kept of each welder qualified.

Miter Joints -USDOT 192.233

No mitered joints will be allowed on this pipeline.

Inspection and Test of Welds -USDOT 192.241

A visual examination shall be performed on all welded joints and they shall meet the requirements of API 1104.

Non-Destructive Testing -USDOT 192.243/NJAC 14:7-1.6

All new welded joints shall be radiographed 100% and meet the standards of API 1104.

All radiographic testing shall be performed by trained, experienced persons and meet the standards of API 1104.

Oversight of field welding will be by welding inspectors qualified by the Company on the basis of training and experience.

Repair or Removal of Defects -USDOT 192.245

Any weld that is determined to be unacceptable under API 1104 shall be removed or repaired. All repairs shall be completed in accordance with written weld repair procedures that have been qualified under API 1104.

Oversight of Construction Activity -USDOT 192.305/NJAC 14:7-1.24

Oversight of pipeline construction activity will be by inspectors qualified by the Company on the basis of knowledge and experience in all areas of work to be inspected and meet all requirements of the of the Company's qualification of pipeline personnel.

Directional Drilling Operations NJAC 14:7-1.25

A plan and profile which depicts all subsurface facilities in proximity has been prepared for all proposed horizontal directional drilling (HDD) locations within the project.

All subsurface facilities will be located by test hole prior to HDD operations.

Instrumentation approved by the Company will be provided, used and maintained to accurately locate the drilling/reaming head during HDD operations.

All HDD pipe shall be supported by roller assemblies.

A Company qualified inspector shall be physically present on site at all times when subsurface utilities are being crossed by HDD.

Bends and Elbows -USDOT 192.313-315/ NJAC 14:7-1.7

All changes in direction shall be made using field bending equipment or manufactured elbows as indicated on the drawings. All field bends shall have a smooth contour. No wrinkle bends shall be allowed.

Protection from Hazards -USDOT 192.317

The pipeline shall be designed and constructed to avoid any hazards that may cause the pipeline to move or sustain any abnormal loads. The pipeline located above ground that is located in the vicinity of vehicular traffic shall be protected from accidental damage by concrete bollards.

Installation of Pipe in a Ditch -USDOT 192.319

The pipeline shall be installed in a ditch with a firm graded bottom free of large stones, clods, rubbish, wood and welding rods. The ditch shall be backfilled with material free of large stones, clods, rubbish, wood and welding rods and in a manner to avoid damaging to the coating of the pipe.

Casing -USDOT 192.323

All casings for the pipeline shall be designed to withstand the superimposed loads. The ends of the casing shall be sealed and the casing shall be vented.

Underground Clearance -USDOT 192.325

The pipeline shall be installed maintaining a minimum 12" of clearance from any other underground structure.

Cover -USDOT 192.327/NJAC 14:7-1.12

The pipeline shall be installed with a minimum cover of 48".

External Corrosion Control: Buried or Submerged Pipelines Installed After July 31, 1971 -USDOT 192.455

All piping shall be protected from external corrosion by mill applied coating, except field joints which will be coated with heat shrink sleeves. A cathodic protection system shall be designed and installed to protect this pipeline.

External Corrosion Control: Protective Coating -USDOT 192.461/NJAC 14:7-1.11

All piping shall be protected from external corrosion by mill applied coating, except field joints which will be coated with heat shrink sleeves.

External Corrosion Control: Cathodic Protection -USDOT 192.463

A cathodic protection system shall be designed and installed to protect this pipeline.

External Corrosion Control: Test Stations -USDOT 192.469/.471

This pipeline shall have sufficient test stations for electrical measurement to determine the adequacy of cathodic protection. The test station wires shall be

connected to the pipeline so as to remain mechanically secure and electrically conductive.

Internal Corrosion Control: Design and Construction of Transmission Line -USDOT 192.476

The pipeline shall be designed and constructed to reduce the risk that liquids will collect in the line. The pipeline shall be designed to allow the use of pigs and smart pigs for the removal of liquids and the monitoring of internal corrosion.

Atmospheric Corrosion Control: General -USDOT 192.479

All above ground pipeline facilities shall be coated and sealed via Flame Sprayed TSA (Thermal Sprayed Aluminum). The Flame Sprayed TSA shall be applied in accordance with NACE No. 12/AWS C2.23M/SSPC-cs 23.00 – Specification for the Application of Thermal Spray Coatings (Metallizing) of Aluminum, Zinc, and Their Alloys and Composites for the Corrosion Protection of Steel.

Strength Test Requirements for a Steel Pipeline to Operate at Hoop Stress of 30 Percent or More of SMYS -USDOT 192.503/.505/.619 NJAC 14:7-1.14

A static pressure test, with water, shall be performed for a minimum 24-hour period at 900 psig (min) on all piping which will stress the 16 inch (.375 wall) pipe to 29.5 percent of SMYS.

Records -USDOT 192.517

All records of static pressure and leak tests shall be retained for the life of the pipeline. The proposed route of this pipeline is shown on the drawings entitled “16” Natural Gas Pipeline – Lawnside Borough to Pine Hill Borough, Camden County, New Jersey – Prepared for South Jersey Gas, dated December 30, 2016 prepared by J. F. Kiely Service Company.

MAOP -USDOT -192.619

The MAOP of the 16 inch pipeline will be 600 psig. The 16 inch pipeline shall not be operated in excess of 600 psig.

Odorization of Gas -USDOT 192.625/NJAC 14:7-1.16

The gas in this pipeline will be odorized so that the gas concentration in air of one-fifth of the lower explosive is detectable by smell.

Tapping Pipelines Under Pressure -USDOT 192.627

All tapping and stop-offs will be performed by a qualified crew.

Purging of Pipelines -USDOT 192.629

The new pipeline shall be purged into service using natural gas. This procedure will be done in a manner which will not allow a hazardous mixture of gas and air to form.

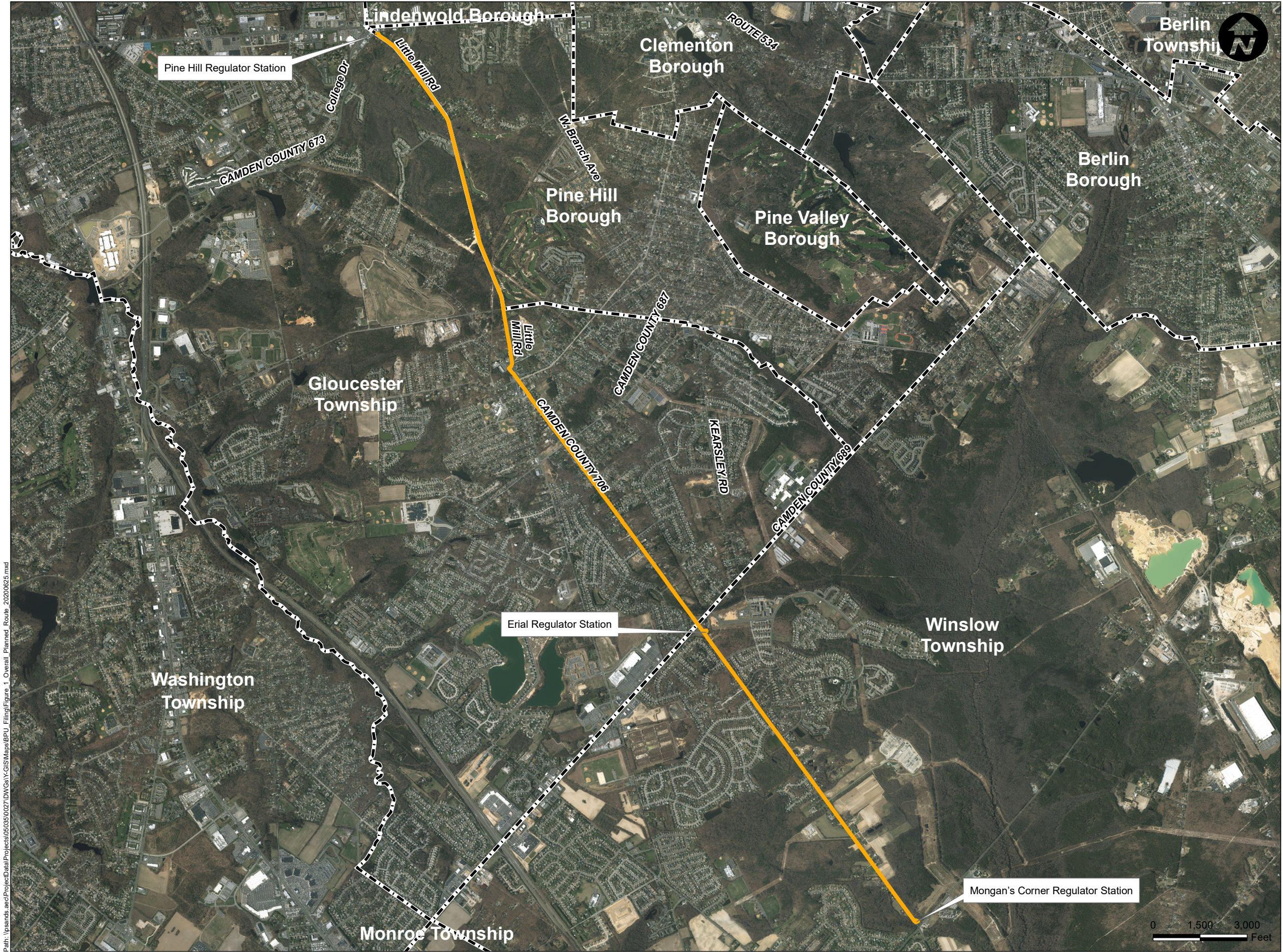
Pipeline Marker -USDOT 192.707 / NJAC 14:7-1.11

Pipeline markers shall be installed at all locations as outlined in this section of Subpart 192. In addition, for pipe 16" or more in diameter, marking tape consisting of one 12 inch wide strip or two 6 inch wide strips shall be installed side-by-side in any trenched in place piping.

What Additional Preventive and Mitigative Measures Must an Operator Take? -USDOT 192.935

All above ground sectionalizing block valves shall be designed to be remote control valves (RCV).

Exhibit B



Legend

- Route
- Municipal Boundary

Sources:
1. Municipalities from New Jersey Office of Information Technology (NJGIT) - Office of Geographic Information Systems (OGIS), 2016.
2. Streets from the New Jersey OIT, OGIS, Road Centerlines of New Jersey, 2017.
3. Aerial from NJDEP, High Resolution Orthoimagery, 2015



67A MOUNTAIN BOULEVARD EXT.
P.O. BOX 4039
WARREN, NEW JERSEY 07059
PHONE: (732) 560-9700
CERTIFICATE OF AUTHORIZATION NO. 24GA28032700

ALL DIMENSIONS MUST BE VERIFIED BY THE CONTRACTOR. NOTIFY PAULUS, SOKOLOWSKI AND SARTOR, LLC OF ANY CONFLICTS, ERRORS, AMBIGUITIES OR DISCREPANCIES IN THE CONTRACT DRAWINGS OR SPECIFICATIONS BEFORE PROCEEDING WITH CONSTRUCTION.
ALL DIMENSIONS SHALL BE AS NOTED IN WORDS OR NUMBERS ON THE CONTRACT DRAWINGS. DO NOT SCALE THE DRAWINGS TO DETERMINE DIMENSIONS.
THESE CONTRACT DRAWINGS CONTAIN DATA INTENDED SPECIFICALLY FOR THE NOTED PROJECT AND CLIENT. THEY ARE NOT INTENDED FOR USE ON EXTENSIONS OF THIS PROJECT OR FOR REUSE ON ANY OTHER PROJECT.
THE COPYING AND/OR MODIFICATION OF THIS DOCUMENT OR ANY PORTION THEREOF WITHOUT THE WRITTEN PERMISSION OF PAULUS, SOKOLOWSKI AND SARTOR, LLC IS PROHIBITED.
UNLESS THESE DRAWINGS ARE SPECIFICALLY DESIGNATED AS "CONSTRUCTION ISSUE", THESE DRAWINGS SHALL NOT BE USED FOR CONSTRUCTION OR IMPROVEMENTS DEPICTED HEREIN. CONTRACTORS SHALL NOTIFY THE DESIGN ENGINEER TO OBTAIN CONSTRUCTION DOCUMENTS.
COPYRIGHT 2020 PAULUS, SOKOLOWSKI, AND SARTOR LLC - ALL RIGHTS RESERVED.

PROJECT TITLE

Camden County
Reliability Project – Phase II
16" Distribution Pipeline

SHEET TITLE

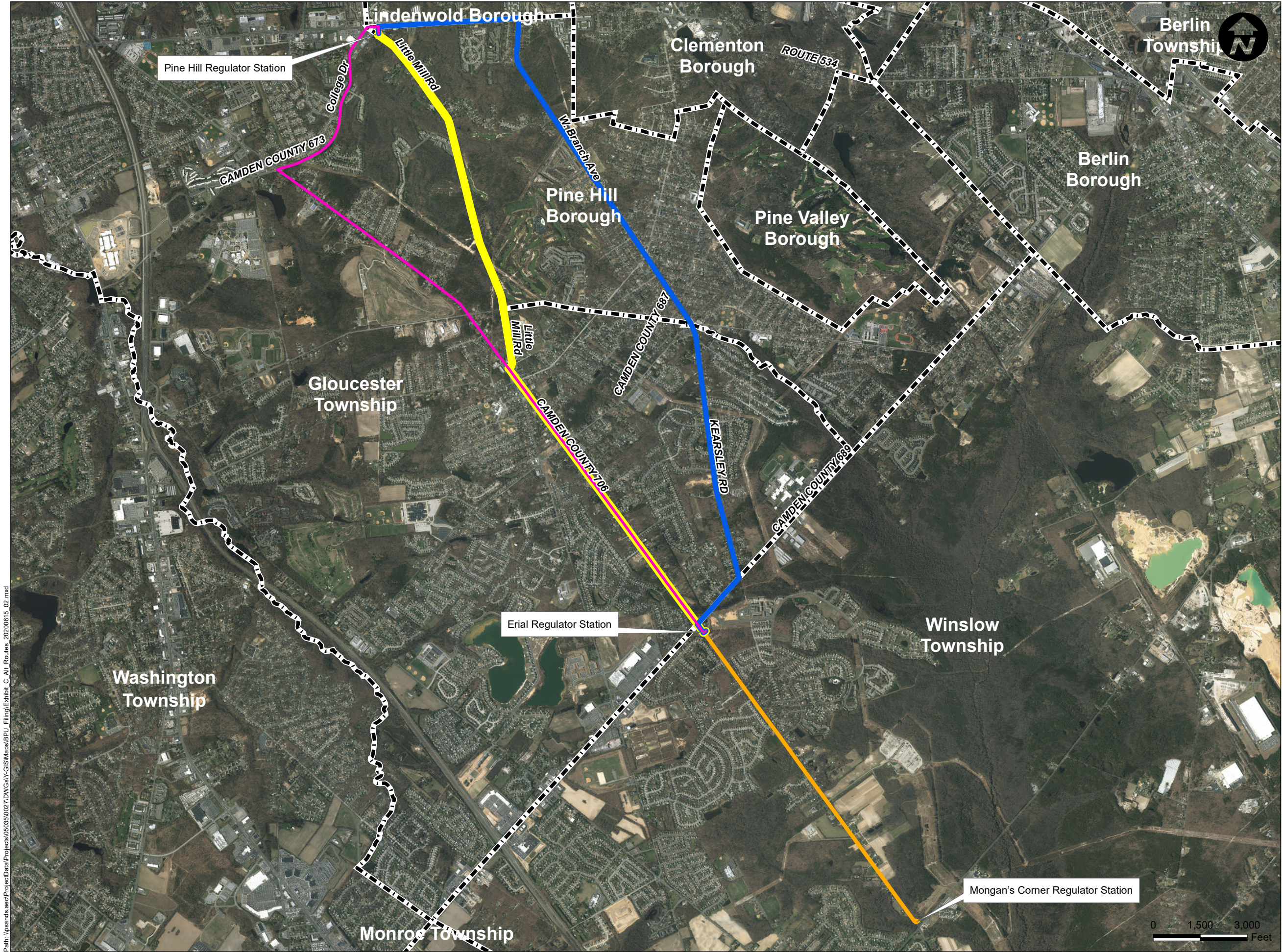
Overall Planned Route Map

PROJ. NO. 05035.027

DATE 6/25/2020
DRN. BY DM
CHK. BY KM
SCALE 1" = 3,000'

FIGURE 1

Exhibit C



Legend

- Route
- Alternative Route A
- Alternative Route B
- Alternative Route C
- Municipal Boundary

Sources:
1. Municipalities from New Jersey Office of Information Technology (NJGIT) - Office of Geographic Information Systems (OGIS), 2016.
2. Streets from the New Jersey OIT, OGIS, Road Centerlines of New Jersey, 2017.
3. Aerial from NJDEP, High Resolution Orthoimagery, 2015



67A MOUNTAIN BOULEVARD EXT.
P.O. BOX 4039
WARREN, NEW JERSEY 07059
PHONE: (732) 560-9700
CERTIFICATE OF AUTHORIZATION NO. 24GA28032700

ALL DIMENSIONS MUST BE VERIFIED BY THE CONTRACTOR. NOTIFY PAULUS, SOKOLOWSKI AND SARTOR, LLC OF ANY CONFLICTS, ERRORS, AMBIGUITIES OR DISCREPANCIES IN THE CONTRACT DRAWINGS OR SPECIFICATIONS BEFORE PROCEEDING WITH CONSTRUCTION.
ALL DIMENSIONS SHALL BE AS NOTED IN WORDS OR NUMBERS ON THE CONTRACT DRAWINGS. DO NOT SCALE THE DRAWINGS TO DETERMINE DIMENSIONS.
THESE CONTRACT DRAWINGS CONTAIN DATA INTENDED SPECIFICALLY FOR THE NOTED PROJECT AND CLIENT. THEY ARE NOT INTENDED FOR USE ON EXTENSIONS OF THIS PROJECT OR FOR REUSE ON ANY OTHER PROJECT.
THE COPYING AND/OR MODIFICATION OF THIS DOCUMENT OR ANY PORTION THEREOF WITHOUT THE WRITTEN PERMISSION OF PAULUS, SOKOLOWSKI AND SARTOR, LLC IS PROHIBITED.
UNLESS THESE DRAWINGS ARE SPECIFICALLY DESIGNATED AS "CONSTRUCTION ISSUE", THESE DRAWINGS SHALL NOT BE USED FOR CONSTRUCTION OR IMPROVEMENTS DEPICTED HEREIN. CONTRACTORS SHALL NOTIFY THE DESIGN ENGINEER TO OBTAIN CONSTRUCTION DOCUMENTS.
COPYRIGHT 2020 PAULUS, SOKOLOWSKI AND SARTOR LLC. - ALL RIGHTS RESERVED.

PROJECT TITLE

Camden County
Reliability Project – Phase II
16" Distribution Pipeline

SHEET TITLE

Alternate Route Exhibit

PROJ. NO. 05035.027

DATE 6/15/2020
DRN. BY DM
CHK. BY KM
SCALE 1" = 3,000'
EXHIBIT C

Exhibit D

**Camden County Reliability Project - Phase II
16" Distribution Pipeline**

Count	Prop. 16" P/L w/in SJG Easement (Y/N)	County	Municipality	Block	Lot	Property Location	Property Class	Property Class Description	Owner Name and Mailing Address	Type of Structure ¹
001	N	CAMDEN	GLOUCESTER TWP	1	1.01	1140 BLACKWOOD CLEMENTON RD	4A	Commerical	KENTUCKY FRIED CHICKEN 1140 BLACKWOOD CLEMENTON RD GLOUCESTER TWP, NJ 08081	C
002	N	CAMDEN	GLOUCESTER TWP	14402	30	12 LITTLE MILL ROAD	2	Residential Property (1 - 4 Family)	HAMILTON ROBERT 12 LITTLE MILL ROAD LAUREL SPRINGS NJ 080216904	H
003	N	CAMDEN	GLOUCESTER TWP	14402	31	22 LITTLE MILL ROAD	15F	Other Exempt	CENTER FOR FAMILY SERVICES INC 22 LITTLE MILL ROAD LAUREL SPRINGS, NJ 08021	PA
004	N	CAMDEN	GLOUCESTER TWP	14402	42	76 LITTLE MILL ROAD	2	Residential Property (1 - 4 Family)	PINA, FRANK 76 LITTLE MILL RD CLEMENTON, NJ 08021	H
005	N	CAMDEN	PINE HILL BORO	1	2.09	10 CAROL DRIVE	2	Residential Property (1 - 4 Family)	DI BIANCO, VINCENT 10 CAROL DRIVE PINE HILL NJ 080216803	H
006	N	CAMDEN	GLOUCESTER TWP	14402	43.01	80 LITTLE MILL ROAD	2	Residential Property (1 - 4 Family)	PARKS DAVID H & LINDA A 80 LITTLE MILL ROAD LAUREL SPRINGS NJ 08021	H
007	N	CAMDEN	GLOUCESTER TWP	14402	43	100 LITTLE MILL ROAD	3B	Farm (Qualified)	STUCKERT EDWARD G 100 LITTLE MILL ROAD LAUREL SPRINGS NJ 080216806	H
008	N	CAMDEN	GLOUCESTER TWP	14403	1	1 LA MOTTE COURT	2	Residential Property (1 - 4 Family)	MILLER, GEORGETTE A. 1 LAMOTTE CT LAUREL SPRINGS NJ 08021	H
009	N	CAMDEN	PINE HILL BORO	1.11	10.03	350 LITTLE MILL RD	2	Residential Property (1 - 4 Family)	GOSTOVICH, VLADE M & CAROLE A 350 LITTLE MILL RD PINE HILL NJ 080216810	H
010	N	CAMDEN	GLOUCESTER TWP	14403	6	2 LA MOTTE COURT	2	Residential Property (1 - 4 Family)	BRYANT, ARTHUR & MCNAIR, CHEVELLE 2 LA MOTTE COURT LAUREL SPRINGS, NJ 08021	H
011	N	CAMDEN	GLOUCESTER TWP	14403	7	150 LITTLE MILL ROAD	2	Residential Property (1 - 4 Family)	WALI, ABOUD H. 150 LITTLE MILL RD CLEMENTON NJ 08021	H
012	N	CAMDEN	PINE HILL BORO	1.11	1	360 LITTLE MILL RD	2	Residential Property (1 - 4 Family)	KELLY LISA 360 LITTLE MILL ROAD PINE HILL NJ 08021	H
013	N	CAMDEN	GLOUCESTER TWP	14403	8	152 LITTLE MILL ROAD	2	Residential Property (1 - 4 Family)	HARRIS PAUL L JR & DAWN M 152 LITTLE MILL RD CLEMENTON, NJ 08021	H
014	N	CAMDEN	GLOUCESTER TWP	14403	9	154 LITTLE MILL ROAD	2	Residential Property (1 - 4 Family)	ROURKE JAMES III & RENEE 154 LITTLE MILL ROAD CLEMENTON NJ 08021	H
015	N	CAMDEN	PINE HILL BORO	1.22	1	370 LITTLE MILL RD	2	Residential Property (1 - 4 Family)	NJHR 2 LLC 740 MARNE HIGHWAY #104 MOORESTOWN NJ 08057	H
016	N	CAMDEN	GLOUCESTER TWP	14403	10	156 LITTLE MILL ROAD	2	Residential Property (1 - 4 Family)	WOLF SAMUEL 156 LITTLE MILL ROAD CLEMENTON NJJ 08021	H
017	N	CAMDEN	GLOUCESTER TWP	14403	22	11 WAYNE COURT	2	Residential Property (1 - 4 Family)	SANTUCCI MARISA 11 WAYNE COURT BLACKWOOD NJ 08012	H

1) Type of Structures are abbreviated as follows: H= House, C=Commerical Building, PA=Public assembly building or public property (school, church, etc.)

**Camden County Reliability Project - Phase II
16" Distribution Pipeline**

Count	Prop. 16" P/L w/in SJG Easement (Y/N)	County	Municipality	Block	Lot	Property Location	Property Class	Property Class Description	Owner Name and Mailing Address	Type of Structure ¹
018	N	CAMDEN	GLOUCESTER TWP	14403	23	9 WAYNE COURT	2	Residential Property (1 - 4 Family)	RAMOS DUANE L 9 WAYNE COURT BLACKWOOD NJ 08012	H
019	N	CAMDEN	GLOUCESTER TWP	15301	1	1202 LITTLE MILL ROAD	2	Residential Property (1 - 4 Family)	PAMPEL MAJORIE MAE 1202 LITTLE MILL ROAD SICKLERVILLE NJ 08081	H
020	N	CAMDEN	GLOUCESTER TWP	15501	1	1221 LITTLE MILL ROAD	2	Residential Property (1 - 4 Family)	NATOLI JOSEPH N 1221 LITTLE MILL ROAD SICKLERVILLE NJ 08081	H
021	N	CAMDEN	GLOUCESTER TWP	15301	2	1212 LITTLE MILL ROAD	2	Residential Property (1 - 4 Family)	PYSZ JOSEPH J & DEBORAH L 1212 LITTLE MILL ROAD ERIAL NJ 08081	H
022	N	CAMDEN	GLOUCESTER TWP	15301	3	1228 LITTLE MILL ROAD	2	Residential Property (1 - 4 Family)	KING, PHILIP A JR & GLORIA A 1228 LITTLE MILL ROAD SICKLERVILLE, NJ 08081	H
023	N	CAMDEN	GLOUCESTER TWP	15301	4	1246 LITTLE MILL ROAD	2	Residential Property (1 - 4 Family)	MCDOWELL, HARRY III & MARIE T 1246 LITTLE MILL ROAD SICKLERVILLE, NJ 08081	H
024	N	CAMDEN	GLOUCESTER TWP	15501	1.01	1249 LITTLE MILL ROAD	2	Residential Property (1 - 4 Family)	TERRANOVA, JOSEPH A & RITA E 1249 LITTLE MILL ROAD ERIAL, NJ 08081	H
025	N	CAMDEN	GLOUCESTER TWP	15501	2	1265 LITTLE MILL ROAD	2	Residential Property (1 - 4 Family)	BRIGLIA ROBERT E JR & KRYSTAL M 1265 LITTLE MILL RD SICKLERVILLE NJ 08081	H
026	N	CAMDEN	GLOUCESTER TWP	15301	5	1264 LITTLE MILL ROAD	2	Residential Property (1 - 4 Family)	MCKILLOP STEPHEN R & DAWN M 1264 LITTLE MILL ROAD SICKLERVILLE NJ 08081	H
027	N	CAMDEN	GLOUCESTER TWP	15301	6	1276 LITTLE MILL ROAD	2	Residential Property (1 - 4 Family)	DE ROSA, DOMINIC J 1276 LITTLE MILL ROAD SICKLERVILLE NJ 08081	H
028	N	CAMDEN	GLOUCESTER TWP	15501	3	1285 LITTLE MILL ROAD	2	Residential Property (1 - 4 Family)	JONES RICARDO F & NICOLE S 1285 LITTLE MILL ROAD ERIAL NJ 08081	H
029	N	CAMDEN	GLOUCESTER TWP	15301	7	1286 LITTLE MILL ROAD	2	Residential Property (1 - 4 Family)	HYSLEY JILL 1286 LITTLE MILL ROAD SICKLERVILLE NJ 08081	H
030	N	CAMDEN	GLOUCESTER TWP	15301	8	1296 LITTLE MILL ROAD	2	Residential Property (1 - 4 Family)	TRACEY ANDREW T 1296 LITTLE MILL ROAD SICKLERVILLE NJ 08081	H
031	N	CAMDEN	GLOUCESTER TWP	15402	1	1 YORK TERRACE	2	Residential Property (1 - 4 Family)	CARBALLO, MARIA 1 YORK TERRACE ERIAL, NJ 08081	H
032	N	CAMDEN	GLOUCESTER TWP	15301	9	1306 LITTLE MILL ROAD	2	Residential Property (1 - 4 Family)	CUNNINGHAM SHAWN & GREGORY LAURA 1306 LITTLE MILL ROAD SICKLERVILLE NJ 08081	H
033	N	CAMDEN	GLOUCESTER TWP	15401	1	2 YORK TERRACE	2	Residential Property (1 - 4 Family)	SINGH LAKSHMAN P & PRABHA PO BOX 143 MARLTON,NJ 08053	H
034	N	CAMDEN	GLOUCESTER TWP	15301	13	2900 ERIAL ROAD	15C	Public Property	GLOUCESTER TOWNSHIP PO BOX 8 BLACKWOOD NJ 080120008	PA

1) Type of Structures are abbreviated as follows: H= House, C=Commerical Building, PA=Public assembly building or public property (school, church, etc.)

**Camden County Reliability Project - Phase II
16" Distribution Pipeline**

Count	Prop. 16" P/L w/in SJG Easement (Y/N)	County	Municipality	Block	Lot	Property Location	Property Class	Property Class Description	Owner Name and Mailing Address	Type of Structure ¹
035	N	CAMDEN	GLOUCESTER TWP	15401	15.01	2920 ERIAL ROAD	4A	Commerical	MALVERN SCHOOL PROPERTIES LP 20 CREEK RD GLEN MILLS PA 19342	C
036	N	CAMDEN	GLOUCESTER TWP	15401	15	2090 ERIAL-CLEMENTON ROAD	4A	Commerical	RITE AID CORP REAL ESTATE #4739 PO BOX 3165 HARRISBURG, PA 17011	C
037	N	CAMDEN	GLOUCESTER TWP	16401	1	1990 NEW BROOKLYN ROAD	4A	Commerical	GCF BANK 381 EGG HARBOR RD SEWELL, NJ 08080	C
038	N	CAMDEN	GLOUCESTER TWP	16302	1	1946 WILLIAMSTOWN ROAD	15F	Other Exempt	GLOUCESTER TWP BD OF FIRE 1946 WILLIAMSTOWN ROAD ERIAL NJ 08081	PA (Firehouse)
039	N	CAMDEN	GLOUCESTER TWP	16302	2	1946 WILLIAMSTOWN ROAD	15F	Other Exempt	GLOUCESTER TWP BD OF FIRE 1946 WILLIAMSTOWN ROAD ERIAL NJ 08081	PA (Firehouse)
040	N	CAMDEN	GLOUCESTER TWP	16401	41	1916 NEW BROOKLYN ROAD	2	Residential Property (1 - 4 Family)	SCOTT, JOSEPH & NAOMI (LE) 1916 NEW BROOKLYN ROAD ERIAL NJ 08081	H
041	N	CAMDEN	GLOUCESTER TWP	16302	4	1901 NEW BROOKLYN ROAD	4A	Commerical	ALLISON HOLDINGS LLC 1901 NEW BROOKLYN ROAD ERIAL, NJ 08081	C
042	N	CAMDEN	GLOUCESTER TWP	16401	40	1898 NEW BROOKLYN ROAD	2	Residential Property (1 - 4 Family)	BRANCA,CARMELLA M 1898 NEW BROOKLYN RD SICKLERVILLE, NJ 08081	H
043	N	CAMDEN	GLOUCESTER TWP	16401	39	1890 NEW BROOKLYN ROAD	2	Residential Property (1 - 4 Family)	LAGROTTERIA, GARY 83 LAKESHORE DRIVE HAMMONTON, NJ 08037	H
044	N	CAMDEN	GLOUCESTER TWP	16401	38	1882 NEW BROOKLYN ROAD	15F	Other Exempt	SILVER JOHN J SR & HELGA M 1882 NEW BROOKLYN ROAD ERIAL NJ 08081	H
045	N	CAMDEN	GLOUCESTER TWP	16401	37	1874 NEW BROOKLYN ROAD	2	Residential Property (1 - 4 Family)	NORCROSS, WILLIAM 1874 NEW BROOKLYN ROAD SICKLERVILLE RD, N J 08081	H
046	N	CAMDEN	GLOUCESTER TWP	16401	36	1868 NEW BROOKLYN ROAD	2	Residential Property (1 - 4 Family)	NORCROSS GEORGE JR & PATRICIA 1868 NEW BROOKLYN ERIAL SICKLERVILLE NJ 08081	H
047	N	CAMDEN	GLOUCESTER TWP	16301	5.02	1859 NEW BROOKLYN ROAD	2	Residential Property (1 - 4 Family)	MCQUAID, MARY 1859 NEW BROOKLYN ROAD ERIAL, NJ 08081	H
048	N	CAMDEN	GLOUCESTER TWP	16401	33	1864 NEW BROOKLYN ROAD	1	Vacant Land	NORCROSS BRIDGET & WM T SR & WM T J 128 WEST AVE WESTVILLE, NJ 08093	H
049	N	CAMDEN	GLOUCESTER TWP	16301	5.01	1855 NEW BROOKLYN ROAD	2	Residential Property (1 - 4 Family)	DRONFIELD SANDRA LEE & LASALA ANTON 1855 NEW BROOKLYN ROAD SICKLERVILLE NJ 08081	H
050	N	CAMDEN	GLOUCESTER TWP	16301	32	1851 NEW BROOKLYN ROAD	2	Residential Property (1 - 4 Family)	PHILLIPS PAULINE 1851 NEW BROOKLYN ROAD SICKLERVILLE NJ 08081	H
051	N	CAMDEN	GLOUCESTER TWP	16401	32	1850 NEW BROOKLYN ROAD	2	Residential Property (1 - 4 Family)	ENSIGN, ELAINE E 1850 NEW BROOKLYN ROAD ERIAL NJ 08081	H

1) Type of Structures are abbreviated as follows: H= House, C=Commerical Building, PA=Public assembly building or public property (school, church, etc.)

**Camden County Reliability Project - Phase II
16" Distribution Pipeline**

Count	Prop. 16" P/L w/in SJG Easement (Y/N)	County	Municipality	Block	Lot	Property Location	Property Class	Property Class Description	Owner Name and Mailing Address	Type of Structure ¹
052	N	CAMDEN	GLOUCESTER TWP	16401	31	1830 NEW BROOKLYN ROAD	2	Residential Property (1 - 4 Family)	THOMPSON, EDWARD 1830 NEW BROOKLYN ROAD SICKLERVILLE RD, N J 08081	H
053	N	CAMDEN	GLOUCESTER TWP	16301	30	1823 NEW BROOKLYN ROAD	15F	Other Exempt	FRITSCH GUENTHER & DONNA 1823 NEW BROOKLYN ROAD ERIAL NJ 08081	H
054	N	CAMDEN	GLOUCESTER TWP	16402	2	2 DEB-LYNN DRIVE	2	Residential Property (1 - 4 Family)	PANAGIOTOPOULO PANO N & SAMANTHA 2 DEB-LYNN DRIVE ERIAL NJ 08081	H
055	N	CAMDEN	GLOUCESTER TWP	16301	29	1811 NEW BROOKLYN ROAD	2	Residential Property (1 - 4 Family)	BUCCI, JOHN & SMAILER, RANDALL L. 10 HERITAGE VALLEY DRIVE SEWELL, NJ 08080	H
056	N	CAMDEN	GLOUCESTER TWP	16402	1	1804 NEW BROOKLYN ROAD	2	Residential Property (1 - 4 Family)	O'NEILL RICHARD & LORENE 1804 NEW BROOKLYN ROAD ERIAL NJ 08081	H
057	N	CAMDEN	GLOUCESTER TWP	16301	28	1801 NEW BROOKLYN ROAD	2	Residential Property (1 - 4 Family)	MAWSON KEVIN E 1801 NEW BROOKLYN RD ERIAL NJ 08081	H
058	N	CAMDEN	GLOUCESTER TWP	16502	1	1790 NEW BROOKLYN ROAD	2	Residential Property (1 - 4 Family)	HEBERLEY GRAYSON H III - TRUSTEE 24 WILKINS AVENUE 1ST FL HADDONFIELD NJ 08033	H
059	N	CAMDEN	GLOUCESTER TWP	16502	2	1778 NEW BROOKLYN ROAD	2	Residential Property (1 - 4 Family)	RIVERA, ALIDO & SANCHEZ, WALEKSA 1778 NEW BROOKLYN ROAD SICKLERVILLE RD, N J 08081	H
060	N	CAMDEN	GLOUCESTER TWP	16301	25	1775 NEW BROOKLYN ROAD	2	Residential Property (1 - 4 Family)	HANSCH, DOLORES E. 1775 NEW BROOKLYN ROAD ERIAL NJ 08081	H
061	N	CAMDEN	GLOUCESTER TWP	16502	3	1772 NEW BROOKLYN ROAD	2	Residential Property (1 - 4 Family)	TOLMAN, WILLIAM & ETHEL 1772 NEW BROOKLYN ROAD SICKLERVILLE, NJ 08081	H
062	N	CAMDEN	GLOUCESTER TWP	16301	24	1765 NEW BROOKLYN ROAD	2	Residential Property (1 - 4 Family)	DAISEY, GEORGE I 1765 NEW BROOKLYN ROAD ERIAL NJ 08081	H
063	N	CAMDEN	GLOUCESTER TWP	16502	4	1764 NEW BROOKLYN ROAD	2	Residential Property (1 - 4 Family)	BURNETT, WILLIAM A. 1764 NEW BROOKLYN ERIAL SICKLERVILLE NJ 08081	H
064	N	CAMDEN	GLOUCESTER TWP	16301	23	1753 NEW BROOKLYN ROAD	2	Residential Property (1 - 4 Family)	VALVARDI ANDREW C & ROSALIE-TRUSTEE 1753 NEW BROOKLYN-ERIAL ERIAL NJ 08081	H
065	N	CAMDEN	GLOUCESTER TWP	16502	5	1750 NEW BROOKLYN ROAD	2	Residential Property (1 - 4 Family)	FRISCH DOUGLAS M 1750 NEW BROOKLYN ROAD SICKLERVILLE NJ 08081	H
066	N	CAMDEN	GLOUCESTER TWP	16502	6	1740 NEW BROOKLYN ROAD	2	Residential Property (1 - 4 Family)	LUNDBERG ROBERT 1740 NEW BROOKLYN RD ERIAL NJ 08081	H
067	N	CAMDEN	GLOUCESTER TWP	17405	6	1697 NEW BROOKLYN ROAD	2	Residential Property (1 - 4 Family)	CARTER, KENNETH G JR & ROSEMARY 1697 NEW BROOKLYN ROAD SICKLERVILLE, NJ 08081	H
068	N	CAMDEN	GLOUCESTER TWP	17405	5	1681 NEW BROOKLYN ROAD	2	Residential Property (1 - 4 Family)	KAISER RAYMOND 1681 NEW BROOKLYN ROAD ERIAL NJ 08081	H

1) Type of Structures are abbreviated as follows: H= House, C=Commerical Building, PA=Public assembly building or public property (school, church, etc.)

**Camden County Reliability Project - Phase II
16" Distribution Pipeline**

Count	Prop. 16" P/L w/in SJG Easement (Y/N)	County	Municipality	Block	Lot	Property Location	Property Class	Property Class Description	Owner Name and Mailing Address	Type of Structure ¹
069	N	CAMDEN	GLOUCESTER TWP	17502	11	1668 NEW BROOKLYN ROAD	2	Residential Property (1 - 4 Family)	COLBY KERIN 1668 NEW BROOKLYN-ERIAL SICKLERVILLE NJ 08081	H
070	N	CAMDEN	GLOUCESTER TWP	17405	4	1669 NEW BROOKLYN ROAD	2	Residential Property (1 - 4 Family)	STORM, JOSEPH W 1669 NEW BROOKLYN ROAD SICKLERVILLE RD, N J 08081	H
071	N	CAMDEN	GLOUCESTER TWP	17405	3	1653 NEW BROOKLYN ROAD	2	Residential Property (1 - 4 Family)	NAPOLI, ANTHONY J. & DAWN COOEY 1653 NEW BROOKLYN RD SICKLERVILLE NJ 08081	H
072	N	CAMDEN	GLOUCESTER TWP	17502	1	1652 NEW BROOKLYN ROAD	2	Residential Property (1 - 4 Family)	ROBINSON, GORDON L SR 1652 NEW BROOKLYN ROAD SICKLERVILLE, NJ 08081	H
073	N	CAMDEN	GLOUCESTER TWP	17405	2	1645 NEW BROOKLYN ROAD	2	Residential Property (1 - 4 Family)	MACHINSKY RICHARD 1645 NEW BROOKLYN ROAD SICKLERVILLE NJ 08081	H
074	N	CAMDEN	GLOUCESTER TWP	17405	1	1637 NEW BROOKLYN ROAD	2	Residential Property (1 - 4 Family)	BUETE ZINA B 1637 NEW BROOKLYN ROAD SICKLERVILLE N J 08081	H
075	N	CAMDEN	GLOUCESTER TWP	17502	60	1630 NEW BROOKLYN ROAD	2	Residential Property (1 - 4 Family)	MATUSAVAGE ROBERT MICHAEL 1630 NEW BROOKLYN ROAD SICKLERVILLE NJ 08081	H
076	N	CAMDEN	GLOUCESTER TWP	17405	96	1623 NEW BROOKLYN ROAD	2	Residential Property (1 - 4 Family)	HILDERBRAND, FRANK O. JR. & RENEE 1623 NEW BROOKLYN RD SICKLERVILLE NJ 08081	H
077	N	CAMDEN	GLOUCESTER TWP	17502	61	1626 NEW BROOKLYN ROAD	2	Residential Property (1 - 4 Family)	BUFF WILLIAM M & MUNDY MARGARET M 1626 NEW BROOKLYN ROAD ERIAL NJ 08081	H
078	N	CAMDEN	GLOUCESTER TWP	17405	95	3 KENWOOD DRIVE	2	Residential Property (1 - 4 Family)	DAVEY WILLIAM P & HELEN J 3 KENWOOD DR ERIAL NJ 080819551	H
079	N	CAMDEN	GLOUCESTER TWP	17407	9	4 KENWOOD DRIVE	2	Residential Property (1 - 4 Family)	WRIGHT DIANE 4 KENWOOD DRIVE SICKLERVILLE NJ 08081	H
080	N	CAMDEN	GLOUCESTER TWP	17504	2	1550 NEW BROOKLYN ROAD	4A	Commerical	TSARAS, DIMOS & TRIC 1550 NEW BROOKLYN ROAD ERIAL, NJ 08081	H
081	N	CAMDEN	GLOUCESTER TWP	17504	4	1536 NEW BROOKLYN ROAD	2	Residential Property (1 - 4 Family)	SEBASTIANI, JOHN PAUL 1536 NEW BROOKLYN ROAD ERIAL, NJ 08081	H
082	N	CAMDEN	GLOUCESTER TWP	17504	4.01	1534 NEW BROOKLYN ROAD	2	Residential Property (1 - 4 Family)	VITALE, JOSEPH M & CORRADETTI, SHAR 1534 NEW BROOKLYN ROAD SICKLERVILLE, NJ 08081	H
083	N	CAMDEN	GLOUCESTER TWP	17407	1	36 KENWOOD DRIVE	2	Residential Property (1 - 4 Family)	TONZELLO, ERNEST M 36 KENWOOD DRIVE SICKLERVILLE, NJ 080819531	H
084	N	CAMDEN	GLOUCESTER TWP	17601	1	1 DEL SORDO DRIVE	2	Residential Property (1 - 4 Family)	CALVERT, GEORGE & TINA 1 DEL SORDO DRIVE ERIAL, NJ 08081	H
085	N	CAMDEN	GLOUCESTER TWP	17405	82	35 KENWOOD DRIVE	2	Residential Property (1 - 4 Family)	PODUFALY, SHARON D. & MICHAEL E. 35 KENWOOD RD ERIAL NJ 08081	H

1) Type of Structures are abbreviated as follows: H= House, C=Commerical Building, PA=Public assembly building or public property (school, church, etc.)

**Camden County Reliability Project - Phase II
16" Distribution Pipeline**

Count	Prop. 16" P/L w/in SJG Easement (Y/N)	County	Municipality	Block	Lot	Property Location	Property Class	Property Class Description	Owner Name and Mailing Address	Type of Structure ¹
086	N	CAMDEN	GLOUCESTER TWP	17603	1	2 DEL SORDO DRIVE	2	Residential Property (1 - 4 Family)	MURPHY, PATRICK & SCHMIDT, TIFFANY 2 DEL SORDO LANE SICKLERVILLE, NJ 08081	H
087	N	CAMDEN	GLOUCESTER TWP	17405	81	1433 NEW BROOKLYN ROAD	2	Residential Property (1 - 4 Family)	QUEEN'S PARK OVAL ASSET HOLDING TRU 5032 PARKWAY PLAZA BLVD CHARLOTTE NC 28217	H
088	N	CAMDEN	GLOUCESTER TWP	17603	5	1424 NEW BROOKLYN ROAD	2	Residential Property (1 - 4 Family)	SANTONE JOHN G JR 40 WILDCAT AVENUE MARLTON NJ 080534140	H
089	N	CAMDEN	GLOUCESTER TWP	17604	1	1388 NEW BROOKLYN ROAD	2	Residential Property (1 - 4 Family)	KARGE, DOROTHY W & HARRY F 1388 NEW BROOKLYN ROAD SICKLERVILLE RD, N J 08081	H
090	N	CAMDEN	GLOUCESTER TWP	17604	2	1366 NEW BROOKLYN ROAD	2	Residential Property (1 - 4 Family)	CLARKE, THOMAS K. & MORRELL, CAROLY 1366 NEW BROOKLYN ROAD SICKLERVILLE RD, N J 08081	H
091	N	CAMDEN	GLOUCESTER TWP	17604	3	1350 NEW BROOKLYN ROAD	2	Residential Property (1 - 4 Family)	DI VITO, JOSEPH & CLAIRE 1350 NEW BROOKLYN ROAD ERIAL NJ 08081	H
092	N	CAMDEN	GLOUCESTER TWP	17405	75	1341 NEW BROOKLYN ROAD	2	Residential Property (1 - 4 Family)	GLEASON, ELIZABETH 1341 NEW BROOKLYN ROAD SICKLERVILLE RD, N J 08081	H
093	N	CAMDEN	GLOUCESTER TWP	17604	4	1 ELIZABETH PLACE	2	Residential Property (1 - 4 Family)	LEVY ANNE D 1 ELIZABETH PLACE SICKLERVILLE NJ 08081	H
094	N	CAMDEN	GLOUCESTER TWP	17604	29	2 ELIZABETH PLACE	2	Residential Property (1 - 4 Family)	MAZZA SCOTT A & SANDRA L 2 ELIZABETH PLACE SICKLERVILLE NJ 08081	H
095	N	CAMDEN	GLOUCESTER TWP	18202	3	1287 NEW BROOKLYN ROAD	2	Residential Property (1 - 4 Family)	SANFLIPPO, JACOB A & CAROL M 1287 NEW BROOKLYN ROAD SICKLERVILLE, NJ 08081	H
096	N	CAMDEN	GLOUCESTER TWP	17604	31	1286 NEW BROOKLYN ROAD	2	Residential Property (1 - 4 Family)	BRANDOLINI ANTHONY V SR 1286 NEW BROOKLYN ROAD ERIAL NJ 08081	H
097	N	CAMDEN	GLOUCESTER TWP	18202	5	1265 NEW BROOKLYN ROAD	2	Residential Property (1 - 4 Family)	CRAMER, CINDY D. & ERNEST F. 1265 NEW BROOKLYN ERIAL ERIAL, NJ 08081	H
098	N	CAMDEN	GLOUCESTER TWP	18201	1	1246 NEW BROOKLYN ROAD	2	Residential Property (1 - 4 Family)	BROWN GEORGE L & CHERYL A 1246 NEW BROOKLYN ROAD SICKLERVILLE RD, N J 08081	H
099	N	CAMDEN	GLOUCESTER TWP	18204	13	1 INNSBRUCK DRIVE	2	Residential Property (1 - 4 Family)	COUSER MARTHA D 1 INNSBRUCK DRIVE SICKLERVILLE NJ 08081	H
100	N	CAMDEN	GLOUCESTER TWP	18204	11	1212 NEW BROOKLYN ROAD	2	Residential Property (1 - 4 Family)	FULLEMAN DAVID 1212 NEW BROOKLYN ROAD SICKLERVILLE NJ 08081	H
101	N	CAMDEN	GLOUCESTER TWP	18202	30	1 WYE MILL ROAD	2	Residential Property (1 - 4 Family)	GONZALEZ WILFREDO JR & SADIE 1 WYE MILL DRIVE SICKLERVILLE NJ 08081	H
102	N	CAMDEN	GLOUCESTER TWP	18203	8	1095 NEW BROOKLYN ROAD	15F	Other Exempt	DAKOTA PROPERTIES INC 770 WOODLANE ROAD #23 MOUNT HOLLY NJ 08060	H

1) Type of Structures are abbreviated as follows: H= House, C=Commerical Building, PA=Public assembly building or public property (school, church, etc.)

**Camden County Reliability Project - Phase II
16" Distribution Pipeline**

Count	Prop. 16" P/L w/in SJG Easement (Y/N)	County	Municipality	Block	Lot	Property Location	Property Class	Property Class Description	Owner Name and Mailing Address	Type of Structure ¹
103	N	CAMDEN	GLOUCESTER TWP	18204	7	1084 NEW BROOKLYN ROAD	2	Residential Property (1 - 4 Family)	LOWE PAUL W & TRUDY 1084 NEW BROOKLYN ROAD SICKLERVILLE NJ 08081	H
104	N	CAMDEN	GLOUCESTER TWP	18204	6	1072 NEW BROOKLYN ROAD	2	Residential Property (1 - 4 Family)	ELLIS, JAMES CASSEL 1072 NEW BROOKLYN RD SICKLERVILLE NJ 08081	H
105	N	CAMDEN	GLOUCESTER TWP	18204	5	1056 NEW BROOKLYN ROAD	2	Residential Property (1 - 4 Family)	US BANK TRUST NA 13801 WIRELESS WAY OKLAHOMA CITY OK 73134	H
106	N	CAMDEN	GLOUCESTER TWP	18204	4	1046 NEW BROOKLYN ROAD	2	Residential Property (1 - 4 Family)	MORSE EBER 1046 NEW BROOKLYN RD SICKLERVILLE NJ 08081	H
107	N	CAMDEN	GLOUCESTER TWP	18203	5	1047 NEW BROOKLYN ROAD	2	Residential Property (1 - 4 Family)	DONNELL, CLARA A 1047 NEW BROOKLYN ROAD SICKLERVILLE RD, N J 08081	H
108	N	CAMDEN	GLOUCESTER TWP	18203	4	1037 NEW BROOKLYN ROAD	2	Residential Property (1 - 4 Family)	BARNETT SARAH & LUKER JASON 1037 NEW BROOKLYN ROAD ERIAL NJ 08081	H
109	N	CAMDEN	GLOUCESTER TWP	18204	3	1030 NEW BROOKLYN ROAD	2	Residential Property (1 - 4 Family)	O'DONNELL, JOSEPH P. & JENNIFER 1030 NEW BROOKLYN ROAD ERIAL, NJ 08081	H
110	N	CAMDEN	GLOUCESTER TWP	18203	3	1023 NEW BROOKLYN ROAD	2	Residential Property (1 - 4 Family)	TYLER ALYSSA 1023 NEW BROOKLYN ROAD SICKLERVILLE NJ 08081	H
111	N	CAMDEN	GLOUCESTER TWP	18204	1	988 NEW BROOKLYN ROAD	2	Residential Property (1 - 4 Family)	DEININGER JAMES K & DONNA M PO BOX 307 SPRINGS, PA 15562	H
112	N	CAMDEN	GLOUCESTER TWP	18103	1	974 NEW BROOKLYN ROAD	2	Residential Property (1 - 4 Family)	KAISER RAY & JOAN 1681 NEW BROOKLYN RD ERIAL NJ 08081	H
113	N	CAMDEN	GLOUCESTER TWP	18103	2	966 NEW BROOKLYN ROAD	2	Residential Property (1 - 4 Family)	RK2100 ENTERPRISE INC 1681 NEW BROOKLYN ROAD ERIAL NJ 08081	H
114	N	CAMDEN	GLOUCESTER TWP	18103	4	952 NEW BROOKLYN ROAD	2	Residential Property (1 - 4 Family)	MANCARELLI, FRANCO & JOSEPHINE 952 NEW BROOKLYN ROAD SICKLERVILLE, NJ 08081	H
115	N	CAMDEN	GLOUCESTER TWP	18103	5	934 NEW BROOKLYN ROAD	3B	Farm (Qualified)	SPENCER JOSEPH H 934 NEW BROOKLYN ROAD SICKLERVILLE NJ 08081	H
116	N	CAMDEN	GLOUCESTER TWP	18103	6.01	894 NEW BROOKLYN ROAD	2	Residential Property (1 - 4 Family)	BUTLER KATHERINE & MICHAEL 894 NEW BROOKLYN ROAD ERIAL NJ 08081	H
117	N	CAMDEN	GLOUCESTER TWP	19001	1	813 NEW BROOKLYN ROAD	4A	Commerical	THOMAS, KATHERINE 24 ABERDEEN DRIVE ERIAL, NJ 08081	C
118	N	CAMDEN	WINSLOW TWP	301.01	1	1 PARLIAMENT ROAD	2	Residential Property (1 - 4 Family)	CORDEIRO, RAYMOND W & JANICE 1 PARLIAMENT RD SICKLERVILLE, NJ 08081	H
119	N	CAMDEN	WINSLOW TWP	403.04	42	1 DUKE DRIVE	2	Residential Property (1 - 4 Family)	DEVER CHRISTOPHER D & VALERY 1 DUKE DR SICKLERVILLE NJ 08081	H

1) Type of Structures are abbreviated as follows: H= House, C=Commerical Building, PA=Public assembly building or public property (school, church, etc.)

**Camden County Reliability Project - Phase II
16" Distribution Pipeline**

Count	Prop. 16" P/L w/in SJG Easement (Y/N)	County	Municipality	Block	Lot	Property Location	Property Class	Property Class Description	Owner Name and Mailing Address	Type of Structure ¹
120	N	CAMDEN	WINSLOW TWP	301.01	2	3 PARLIAMENT ROAD	15F	Other Exempt	MARTINEZ, LUCAS & GLORIA 3 PARLIAMENT RD SICKLERVILLE NJ 08081	Planned Community (H)
121	N	CAMDEN	WINSLOW TWP	301.01	3	5 PARLIAMENT ROAD	2	Residential Property (1 - 4 Family)	PATEL RAVI 5 PARLIAMENT RD SICKLERVILLE, NJ 08081	H
122	N	CAMDEN	WINSLOW TWP	301.01	4	7 PARLIAMENT ROAD	15F	Other Exempt	DELUCA DAVID B 7 PARLIAMENT ROAD SICKLERVILLE NJ 08081	Planned Community (H)
123	N	CAMDEN	WINSLOW TWP	301.01	5	9 PARLIAMENT ROAD	2	Residential Property (1 - 4 Family)	SHAMS, MILTON G 9 PARLIAMENT RD SICKLERVILLE NJ 08081	H
124	N	CAMDEN	WINSLOW TWP	301.01	6	11 PARLIAMENT ROAD	2	Residential Property (1 - 4 Family)	LEWIS AUDREY Y 11 PARLIAMENT ROAD SICKLERVILLE NJ 08081	H
125	N	CAMDEN	WINSLOW TWP	301.01	7	13 PARLIAMENT ROAD	2	Residential Property (1 - 4 Family)	RAMOS EGNES ELUZLLEN 13 PARLIAMENT ROAD SICKLERVILLE, NJ 08081	H
126	N	CAMDEN	WINSLOW TWP	301.01	8	1 TOLL GATE COURT	2	Residential Property (1 - 4 Family)	WILSON DENNIS 1 TOLL GATE COURT SICKLERVILLE NJ 08081	H
127	N	CAMDEN	WINSLOW TWP	301.01	9	3 TOLL GATE COURT	15F	Other Exempt	LETT, JERRY L & ZORA L 3 TOLL GATE COURT SICKLERVILLE NJ 08081	Planned Community (H)
128	N	CAMDEN	WINSLOW TWP	301.01	10	5 TOLL GATE COURT	2	Residential Property (1 - 4 Family)	REW NIGEL KAMON SR 5 TOLL GATE COURT SICKLERVILLE, NJ 08081	H
129	N	CAMDEN	WINSLOW TWP	401	7.01	649 ERIAL ROAD	2	Residential Property (1 - 4 Family)	MCCONNELL, GLORIA J. & JOSEPH E. 649 ERIAL ROAD SICKLERVILLE, NJ 08081	H
130	N	CAMDEN	WINSLOW TWP	301.01	11	7 TOLL GATE COURT	2	Residential Property (1 - 4 Family)	ABRENICA, ELIZABETH & ET ALS 7 TOLL GATE COURT SICKLERVILLE, NJ 08081	H
131	N	CAMDEN	WINSLOW TWP	301.01	12	9 TOLL GATE COURT	2	Residential Property (1 - 4 Family)	HOLDEN JEFFREY L & MARIE J 9 TOLL GATE COURT SICKLERVILLE, NJ 08081	H
132	N	CAMDEN	WINSLOW TWP	401	10	647 ERIAL ROAD	2	Residential Property (1 - 4 Family)	WORRALL, ANDREA B 647 ERIAL ROAD SICKLERVILLE, NJ 08081	H
133	N	CAMDEN	WINSLOW TWP	401	26	101 PROSPECT ROAD	2	Residential Property (1 - 4 Family)	HUMMEL, TERRY J. 101 PROSPECT RD SICKLERVILLE, NJ 08081	H
134	N	CAMDEN	WINSLOW TWP	401	9	100 PROSPECT ROAD	2	Residential Property (1 - 4 Family)	KUHNER, CAROL 100 PROSPECT ROAD SICKLERVILLE, NJ 08081	H
135	N	CAMDEN	WINSLOW TWP	1105.02	2	4 BARN SIDE COURT	2	Residential Property (1 - 4 Family)	DUHART JERVON & AREANA 4 BARN SIDE COURT SICKLERVILLE NJ 08081	H
136	N	CAMDEN	WINSLOW TWP	1105.02	3	3 BARN SIDE COURT	2	Residential Property (1 - 4 Family)	GONZALEZ, REYNALDO & CARMEN 3 BARN SIDE COURT SICKLERVILLE, NJ 08081	H

1) Type of Structures are abbreviated as follows: H= House, C=Commerical Building, PA=Public assembly building or public property (school, church, etc.)

**Camden County Reliability Project - Phase II
16" Distribution Pipeline**

Count	Prop. 16" P/L w/in SJG Easement (Y/N)	County	Municipality	Block	Lot	Property Location	Property Class	Property Class Description	Owner Name and Mailing Address	Type of Structure ¹
137	N	CAMDEN	WINSLOW TWP	402.06	33	2 FRANKLIN LANE	2	Residential Property (1 - 4 Family)	JAMES, SUSAN T. & HERBERT L. 2 FRANKLIN LANE SICKLERVILLE, NJ 08081	H
138	N	CAMDEN	WINSLOW TWP	1105.02	6	4 CORNCRIB CIRCLE	2	Residential Property (1 - 4 Family)	KOUNTZMAN, JAMES A 4 CORNCRIB COURT SICKLERVILLE, NJ 08081	H
139	N	CAMDEN	WINSLOW TWP	1105.02	7	5 CORNCRIB COURT	2	Residential Property (1 - 4 Family)	US TRUST BANK NA 13801 WIRELESS WAY OKLAHOMA CITY OK 73134	H
140	N	CAMDEN	WINSLOW TWP	1105.02	12	6 HAYSTACK COURT	2	Residential Property (1 - 4 Family)	PIERCE MALINDA E 6 HAYSTACK COURT SICKLERVILLE NJ 08081	H
141	N	CAMDEN	WINSLOW TWP	402.09	3	20 SHERMAN LANE	2	Residential Property (1 - 4 Family)	LUNA NELIA P 20 SHERMAN LANE SICKLERVILLE, NJ 08081	H
142	N	CAMDEN	WINSLOW TWP	402.09	5	16 SHERMAN LANE	2	Residential Property (1 - 4 Family)	SIMMONS FRANCHELLA 16 SHERMAN LANE SICKLERVILLE NJ 08081	H
143	N	CAMDEN	WINSLOW TWP	1105.02	13	5 HAYSTACK COURT	2	Residential Property (1 - 4 Family)	DANIELS, DAVID P JR 5 HAYSTACK COURT SICKLERVILLE, NJ 08081	H
144	N	CAMDEN	WINSLOW TWP	402.09	6	14 SHERMAN LANE	2	Residential Property (1 - 4 Family)	SILVA, REYNALD & IRMA M 14 SHERMAN LANE SICKLERVILLE, NJ 08081	H
145	N	CAMDEN	WINSLOW TWP	402.09	7	12 SHERMAN LANE	2	Residential Property (1 - 4 Family)	KAZAKEWICH MICHAEL & VOURAZERIS BETH 12 SHERMAN LANE SICKLERVILLE NJ 08081	H
146	N	CAMDEN	WINSLOW TWP	1105.02	17	8 DOUBLE WOODS ROAD	2	Residential Property (1 - 4 Family)	TRIFILETTI, JOHN S 8 DOUBLE WOODS RD SICKLERVILLE NJ 08081	H
147	N	CAMDEN	WINSLOW TWP	1105.02	18	10 DOUBLE WOODS ROAD	2	Residential Property (1 - 4 Family)	JOHNSON, WAYNE & SANDRA 10 DOUBLE WOODS RD SICKLERVILLE, NJ 08081	H
148	N	CAMDEN	WINSLOW TWP	1105.02	19	12 DOUBLE WOODS ROAD	15F	Other Exempt	MOCK, JAMES W & SUSAN W 12 DOUBLE WOODS ROAD SICKLERVILLE, NJ 08081	Planned Community (H)
149	N	CAMDEN	WINSLOW TWP	402.09	11	4 SHERMAN LANE	2	Residential Property (1 - 4 Family)	HAMBY, JAMES R & LAURA B 4 SHERMAN LANE SICKLERVILLE, NJ 08081	H
150	N	CAMDEN	WINSLOW TWP	1105.02	20	14 DOUBLE WOODS ROAD	2	Residential Property (1 - 4 Family)	ROLDAN BRIAN & KAHISHA 221 BALLY SHANNON WAY APEX, NC 27539	H
151	N	CAMDEN	WINSLOW TWP	402.09	12	2 SHERMAN LANE	2	Residential Property (1 - 4 Family)	STOKES EMMANUEL & KASSIA 2 SHERMAN LANE SICKLERVILLE, NJ 08081	H
152	N	CAMDEN	WINSLOW TWP	1105.02	21	16 DOUBLE WOODS ROAD	2	Residential Property (1 - 4 Family)	DUNN WRIGHT PROPERTIES LLC 133 SOUTH STREET PHILADELPHIA, PA 19147	H
153	N	CAMDEN	WINSLOW TWP	1204.01	2	3 ELSWORTH DRIVE	2	Residential Property (1 - 4 Family)	MCDONALD, ROBERT & KIMBERLY 3 ELSWORTH DRIVE SICKLERVILLE, NJ 08081	H

1) Type of Structures are abbreviated as follows: H= House, C=Commerical Building, PA=Public assembly building or public property (school, church, etc.)

**Camden County Reliability Project - Phase II
16" Distribution Pipeline**

Count	Prop. 16" P/L w/in SJG Easement (Y/N)	County	Municipality	Block	Lot	Property Location	Property Class	Property Class Description	Owner Name and Mailing Address	Type of Structure ¹
154	N	CAMDEN	WINSLOW TWP	1105.02	23	4 ELBOW COURT	2	Residential Property (1 - 4 Family)	RENE PIERRE & MARGUY 4 ELBOW COURT SICKLERVILLE, NJ 08081	H
155	N	CAMDEN	WINSLOW TWP	1105.02	24	5 ELBOW COURT	2	Residential Property (1 - 4 Family)	THOMPSON, MICHAEL M & DIANE P 5 ELBOW COURT SICKLERVILLE, NJ 080810000	H
156	N	CAMDEN	WINSLOW TWP	1105.01	1	2 GATEHOUSE COURT	2	Residential Property (1 - 4 Family)	PATEL, PRAVIN 2 GATEHOUSE CT SICKLERVILLE, NJ 08081	H
157	N	CAMDEN	WINSLOW TWP	1105.01	2	4 GATEHOUSE COURT	2	Residential Property (1 - 4 Family)	FADEYIBI, OMOLAKBAKE & OLUFOLAJI 4 GATEHOUSE COURT SICKLERVILLE, NJ 08081	H
158	N	CAMDEN	WINSLOW TWP	1101	11	588 ERIAL ROAD	2	Residential Property (1 - 4 Family)	ULMER, CHARLES T & BONNIE E 588 ERIAL ROAD SICKLERVILLE, NJ 08081	H
159	N	CAMDEN	WINSLOW TWP	1101	12.01	584 ERIAL ROAD	2	Residential Property (1 - 4 Family)	SMITH, GARY W & LISA L 584 ERIAL ROAD SICKLERVILLE, NJ 08081	H
160	N	CAMDEN	WINSLOW TWP	1101	9	578 ERIAL ROAD	2	Residential Property (1 - 4 Family)	TWEED, EDWARD C 578 ERIAL ROAD SICKLERVILLE, NJ 08081	H
161	N	CAMDEN	WINSLOW TWP	1101	8	574 ERIAL ROAD	2	Residential Property (1 - 4 Family)	PIERSON MILDRED KATHRYN 574 ERIAL ROAD SICKLERVILLE NJ 08081	H
162	N	CAMDEN	WINSLOW TWP	1202.01	39	2 GLENN FORGE DRIVE	2	Residential Property (1 - 4 Family)	SAINTIL MARIE C 2 GLENN FORGE DRIVE SICKLERVILLE NJ 08081	H
163	N	CAMDEN	WINSLOW TWP	1101	7.02	566 ERIAL ROAD	3B	Farm (Qualified)	STILES MARGARET J & KUHN SHERRI L 568 ERIAL ROAD SICKLERVILLE NJ 08081	H
164	N	CAMDEN	WINSLOW TWP	1101	7	558 ERIAL ROAD	3B	Farm (Qualified)	STILES MARGARET J & KUHN SHERRI L 564 ERIAL ROAD SICKLERVILLE NJ 08081	H
165	N	CAMDEN	WINSLOW TWP	1202	10	563 ERIAL ROAD	4A	Commerical	PIERSON, MILDRED 574 ERIAL ROAD SICKLERVILLE, NJ 08081	C
166	N	CAMDEN	WINSLOW TWP	2101	35.01	537 ERIAL ROAD	3B	Farm (Qualified)	DILKS, MAE L. 537 ERIAL ROAD SICKLERVILLE, NJ 08081	H
167	N	CAMDEN	WINSLOW TWP	2001	2.01	530 ERIAL ROAD	2	Residential Property (1 - 4 Family)	JOHNSON FAMILY LP ET ALS 530 ERIAL ROAD SICKLERVILLE NJ 08081	H
168	N	CAMDEN	WINSLOW TWP	2001	2.02	522 ERIAL ROAD	2	Residential Property (1 - 4 Family)	JOHNSON, ROBERT & PATRICIA 528 ERIAL ROAD SICKLERVILLE, NJ 08081	H
169	N	CAMDEN	WINSLOW TWP	2001	4	510 ERIAL ROAD	2	Residential Property (1 - 4 Family)	DUCLOS CONSULTING LLC 38 LANE OF ACRES ERIAL NJ 08081	H
170	N	CAMDEN	WINSLOW TWP	2001	5	504 ERIAL ROAD	2	Residential Property (1 - 4 Family)	ALBERTSON, JOHN T. & CATHERINE M. 504 ERIAL ROAD SICKLERVILLE, NJ 08081	H

1) Type of Structures are abbreviated as follows: H= House, C=Commerical Building, PA=Public assembly building or public property (school, church, etc.)

Camden County Reliability Project - Phase II
16" Distribution Pipeline

Count	Prop. 16" P/L w/in SJG Easement (Y/N)	County	Municipality	Block	Lot	Property Location	Property Class	Property Class Description	Owner Name and Mailing Address	Type of Structure ¹
171	N	CAMDEN	WINSLOW TWP	2001	4.01	502 ERIAL ROAD	2	Residential Property (1 - 4 Family)	ALBERTSON, JOHN T 502 ERIAL ROAD SICKLERVILLE, NJ 08081	H
172	N	CAMDEN	WINSLOW TWP	2101	42	431 ERIAL ROAD	2	Residential Property (1 - 4 Family)	SANTINI, DOMENICO & MICHELINA &ETAL 431 ERIAL ROAD SICKLERVILLE, NJ 08081	H
173	N	CAMDEN	WINSLOW TWP	2101	43	425 ERIAL ROAD	2	Residential Property (1 - 4 Family)	PETERS, TIMOTHY M 425 ERIAL ROAD SICKLERVILLE, NJ 08081	H
174	N	CAMDEN	WINSLOW TWP	2101	44	417 ERIAL ROAD	2	Residential Property (1 - 4 Family)	ROBERTS EMMA V & ANNA 412 WILLIAMSTOWN ROAD C14 SICKLERVILLE NJ 08081	H

1) Type of Structures are abbreviated as follows: H= House, C=Commerical Building, PA=Public assembly building or public property (school, church, etc.)

Exhibit E

NOTICE OF FILING AND PUBLIC HEARING
NOTICE TO THE RESIDENTS OF THE BOROUGH OF PINE HILL THE TOWNSHIP
OF GLOUCESTER, AND THE TOWNSHIP OF WINSLOW
IN THE MATTER OF THE PETITION OF SOUTH JERSEY GAS COMPANY FOR
AUTHORIZATION TO CONSTRUCT AND OPERATE A 16" PIPELINE PURSUANT
TO N.J.A.C. 14:7-1.4
CAMDEN COUNTY RELIABILITY PROJECT PHASE II
DOCKET NO. GO20xxxxxxx

PLEASE TAKE NOTICE that on September 18, 2020, South Jersey Gas Company ("South Jersey" or the "Company") filed a Petition with the New Jersey Board of Public Utilities (the "Board") requesting that the Board issue an Order authorizing South Jersey to initiate construction of a pipeline refurbishment project necessary to ensure adequate gas delivery pressure on peak design days to serve the Camden and Burlington County portions of South Jersey's gas distribution system. Specifically, the Company is seeking approval to construct a new 16-inch diameter distribution pipeline, parallel to its existing "Lawnside Line" through a six-mile portion of Camden County (the "Project").

South Jersey is planning to construct a new 16-inch diameter natural gas pipeline designed, constructed, tested and certified for a maximum allowable operating pressure ("MAOP") of 600 psig. The Project will: (1) ensure adequate natural gas operating pressures to the localized area on even the coldest days; (2) alleviate potential operational constraints in Camden and Burlington Counties; and (3) ensure other parts of South Jersey's gas distribution system can operate as originally designed to satisfy customer demands through South Jersey's service territory.

The Project will commence in the Borough of Pine Hill and proceed along existing County road rights-of way through the Township of Gloucester, terminating in the Township of Winslow. Within the County public rights-of-way, the Project will be constructed in CR 706 (New Brooklyn-Erial Road). Approximately 2.2 miles of the Project will be located in the Borough of Pine Hill and Gloucester Township rights-of-way on Little Mill Road.

The Company estimates a Project completion date of October 2022.

NO CHANGES IN RATES WILL RESULT FROM THE PETITION.

Notice of this filing has been served on the Clerks of the affected municipalities and the Clerk of Camden County. Copies of the Company's filing are available the South Jersey website at www.southjerseygas.com/for-my-home/current-regulatory-filings.html.

PLEASE TAKE FURTHER NOTICE that due to the COVID-19 state of emergency, virtual public comment hearings will be conducted on the following dates and times so that members of the public may present their views on the Company's filing. Information provided at the public hearings will become part of the record of this case and will be considered by the Board in making its decision.

Xxx xx, 20xx at x:xx p.m.

Webcast: <https://zoom.us/TBD>; Meeting ID: TBD; Passcode: TBD.

Dial In (callers can use any phone number): TBD;

Upon calling in, the caller will be prompted to enter the meeting ID of TBD and press the pound or hashtag button (#);

Press the pound or hashtag button (#) a second time (in response to the second electronic prompt);

The caller will then be prompted to enter the password for the public meeting of TBD and press the pound or hashtag button (#);

The participant will then be entered into the waiting room and thereafter be admitted into the public hearing. The participant should mute their phone and/or computer microphone to prevent background noise. Failure to mute your own device may cause the meeting host to mute the participant and the participant would have to disconnect and join the meeting again to participate in the public discussion portion.

A representative of the Board will preside over the virtual public hearings. Members of the public are invited to participate and express their views on the proposed project. Such comments will be made a part of the final record in the proceeding. Whether or not you participate in the virtual public hearings, written comments may be submitted to the Board with the heading “IN THE MATTER OF THE PETITION OF SOUTH JERSEY GAS COMPANY FOR AUTHORIZATION TO CONSTRUCT AND OPERATE A 16” PIPELINE PURSUANT TO N.J.A.C. 14:7-1.4 CAMDEN COUNTY RELIABILITY PROJECT PHASE II, Docket No. GO20xxxxxx” regardless of whether you attend the hearing by addressing them to Aida Camacho-Welch, Office of the Secretary, Board of Public Utilities, 44 S. Clinton Avenue, P.O. Box 350, Trenton, NJ 08625-0350.

In order to encourage full participation in this opportunity for public comment, please submit any requests for special accommodations, including interpreters, at least 48 hours prior to this hearing by contacting Deborah M. Franco, at 908-662-8448.

SOUTH JERSEY GAS COMPANY

By: Melissa Orsen, President