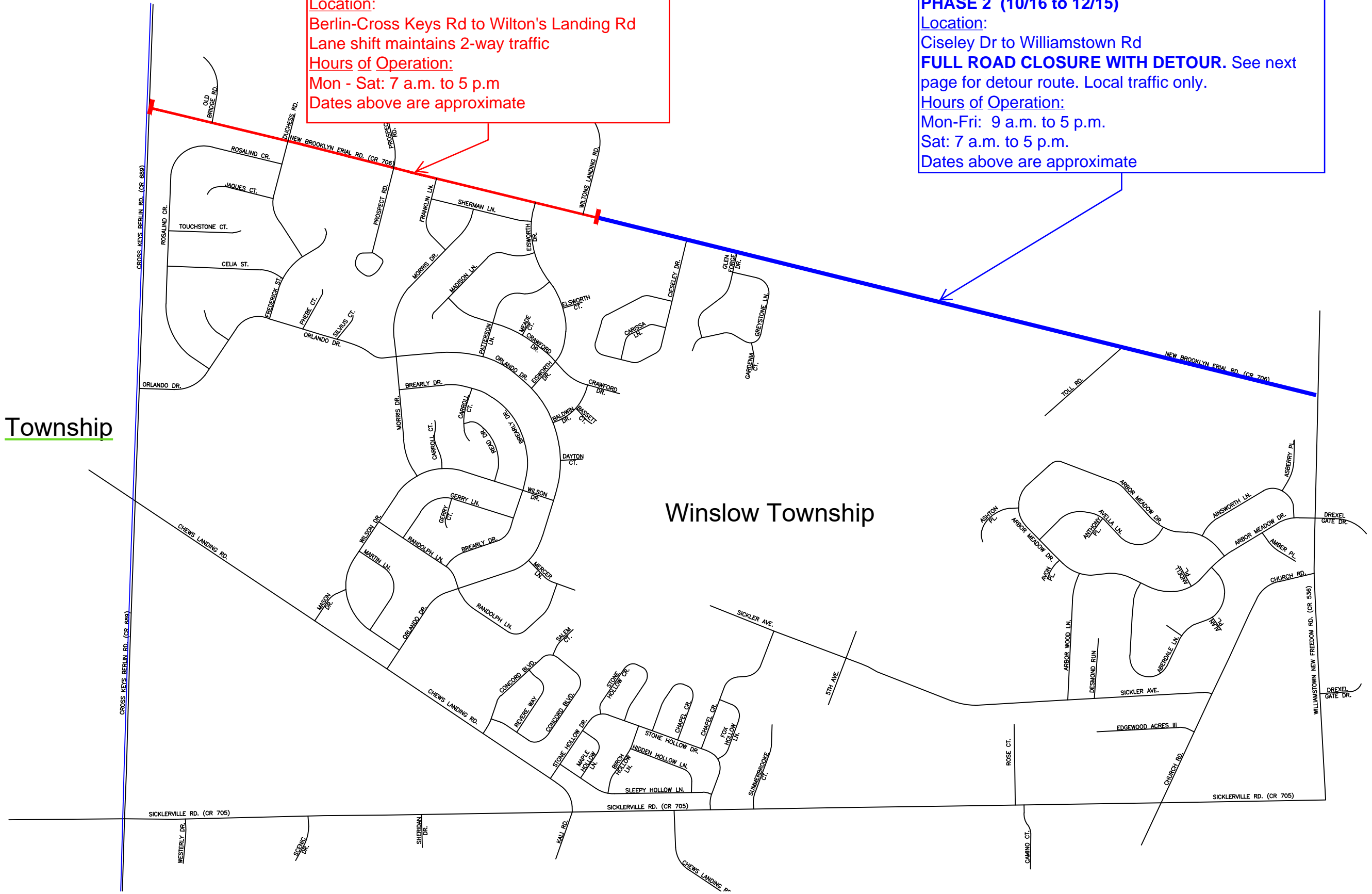


**PHASE 1 (9/11 to 10/13)**  
**Location:**  
 Berlin-Cross Keys Rd to Wilton's Landing Rd  
 Lane shift maintains 2-way traffic  
**Hours of Operation:**  
 Mon - Sat: 7 a.m. to 5 p.m  
 Dates above are approximate

**PHASE 2 (10/16 to 12/15)**  
**Location:**  
 Ciseley Dr to Williamstown Rd  
**FULL ROAD CLOSURE WITH DETOUR.** See next page for detour route. Local traffic only.  
**Hours of Operation:**  
 Mon-Fri: 9 a.m. to 5 p.m.  
 Sat: 7 a.m. to 5 p.m.  
 Dates above are approximate

Gloucester Township

Winslow Township



Prepared By:



KIELY ENGINEERING  
 716 WHITE HORSE PIKE  
 HAMMONTON, NJ 08037  
 WWW.KIELYBUILDS.COM  
 (609) 666-5410

Prepared For:

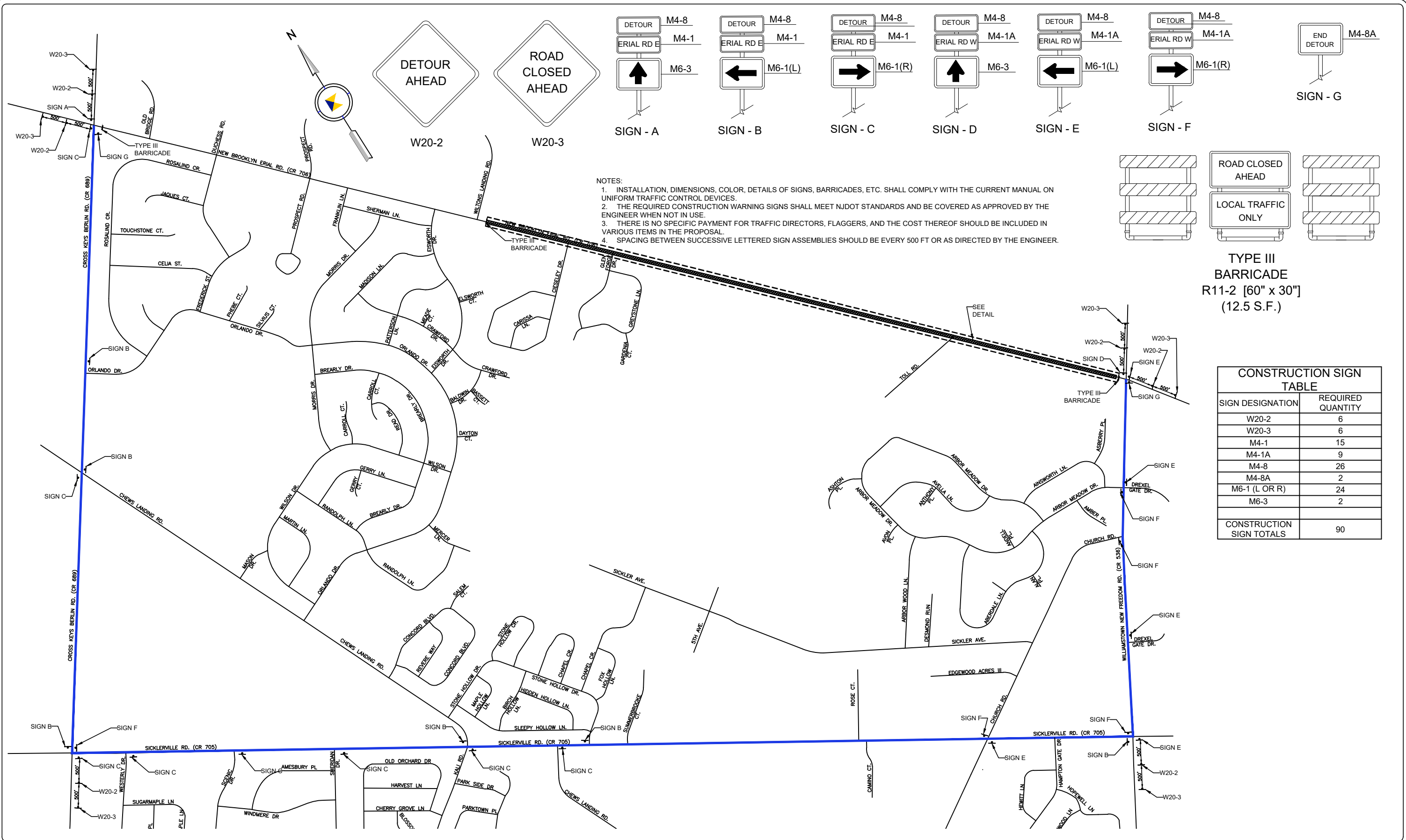


Title:  
 TRAFFIC PLAN KEY MAP  
 NEW BROOKLYN ERIAL ROAD HDD  
 WINSLOW TOWNSHIP  
 CAMDEN COUNTY, NEW JERSEY

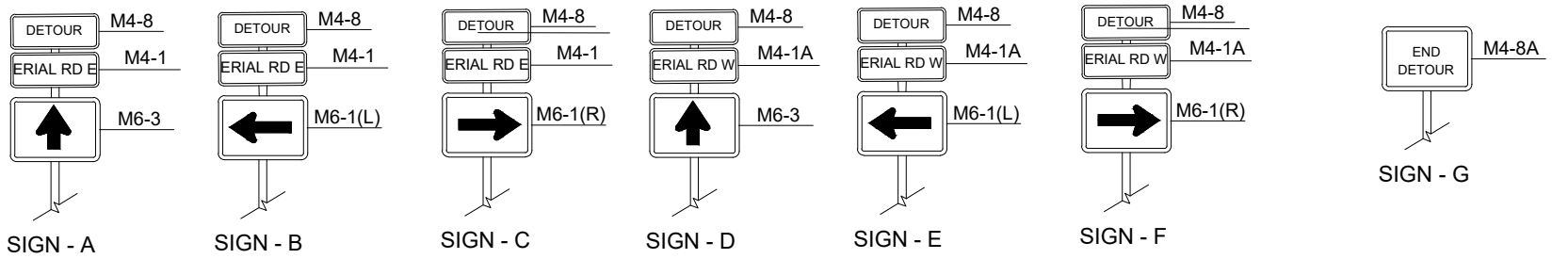
No.	Issue / Revision	Check	Approve	Date
1	REMOVE STOP AND SLOW	JM	JH	07/14/23
2	UPDATE STREET SIGN NAMES	JM	JH	08/16/23

Scale: N.T.S.

Project No: 23-00042	DWG. No: KM-01
-------------------------	-------------------



NOTES:  
 1. INSTALLATION, DIMENSIONS, COLOR, DETAILS OF SIGNS, BARRICADES, ETC. SHALL COMPLY WITH THE CURRENT MANUAL ON UNIFORM TRAFFIC CONTROL DEVICES.  
 2. THE REQUIRED CONSTRUCTION WARNING SIGNS SHALL MEET NJDOT STANDARDS AND BE COVERED AS APPROVED BY THE ENGINEER WHEN NOT IN USE.  
 3. THERE IS NO SPECIFIC PAYMENT FOR TRAFFIC DIRECTORS, FLAGGERS, AND THE COST THEREOF SHOULD BE INCLUDED IN VARIOUS ITEMS IN THE PROPOSAL.  
 4. SPACING BETWEEN SUCCESSIVE LETTERED SIGN ASSEMBLIES SHOULD BE EVERY 500 FT OR AS DIRECTED BY THE ENGINEER.



CONSTRUCTION SIGN TABLE	
SIGN DESIGNATION	REQUIRED QUANTITY
W20-2	6
W20-3	6
M4-1	15
M4-1A	9
M4-8	26
M4-8A	2
M6-1 (L OR R)	24
M6-3	2
<b>CONSTRUCTION SIGN TOTALS</b>	<b>90</b>

Prepared By:

KIELY ENGINEERING  
 716 WHITE HORSE PIKE  
 HAMMONTON, NJ 08037  
 WWW.KIELYBUILDS.COM  
 (609) 666-5410

Prepared For:

Title:

TRAFFIC PLANS FOR  
 NEW BROOKLYN ERIAL ROAD HDD  
 WINSLOW TOWNSHIP  
 CAMDEN COUNTY, NEW JERSEY

No.	Issue / Revision	Check	Approve	Date
1	REMOVE STOP AND SLOW	JM	JH	07/14/23
2	UPDATE STREET SIGN NAMES	JM	JH	08/16/23

Scale: N.T.S.

Project No: 23-00042      DWG. No: TP-02