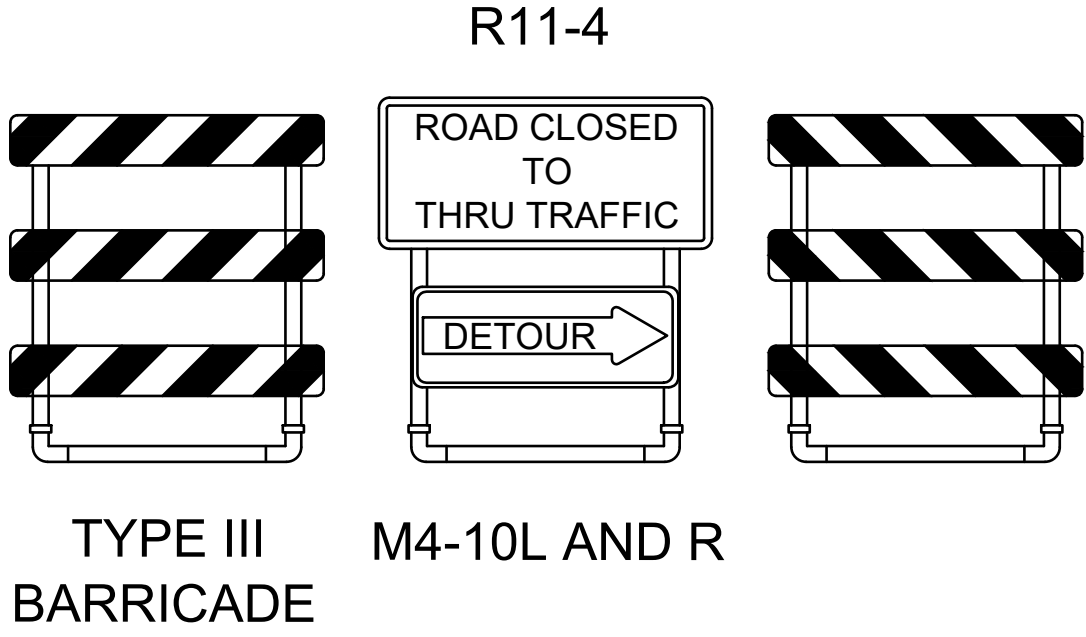
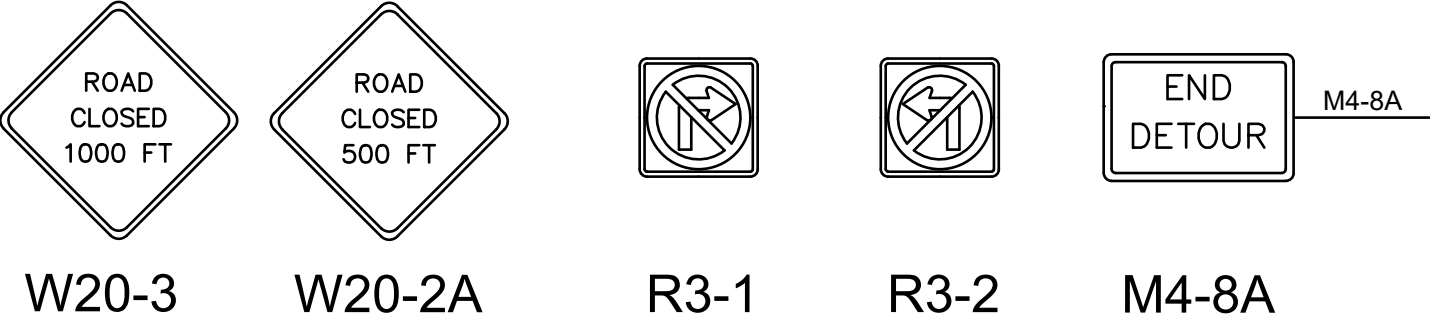
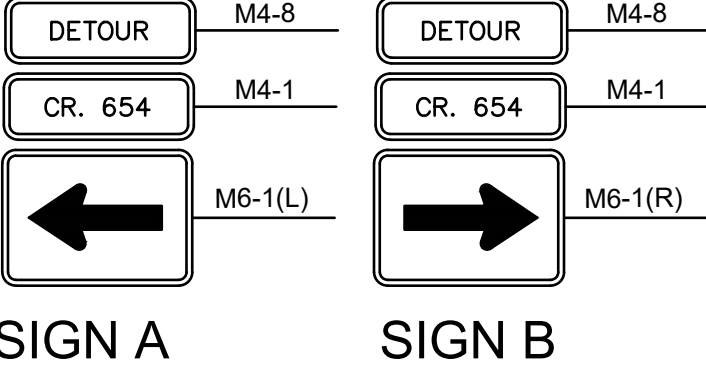


LEGEND

ROAD CLOSURE
DETOUR



NOTE:
RESIDENTS SHALL HAVE ACCESS TO THEIR HOMES AND DRIVEWAYS AT ALL TIMES DURING THE ROAD CLOSURE. EMERGENCY VEHICLES WILL BE PROVIDED ACCESS THROUGH THE ROAD CLOSURE AREA AT ALL TIMES.

CONSTRUCTION SIGN TABLE	
SIGN DESIGNATION	REQUIRED QUANTITY
M4-8	6
M4-1	6
M6-1	6
W20-3	2
W20-2A	2
R3-1	2
R3-2	2
M4-8A	2
R11-4	2
M4-10L	1
M4-10R	1
CONSTRUCTION SIGN TOTALS	32

NOTE TO CONTRACTOR:
BEFORE PERFORMING ANY WORK, THE CONTRACTOR SHALL CONTACT THE "DIG NUMBER" (PHONE 800-272-1000) FOR A MARK-OUT OF ALL UNDERGROUND UTILITIES. IT IS THE RESPONSIBILITY OF THE CONTRACTOR TO CONTACT THE "DIG NUMBER" AND TO ASCERTAIN THE LOCATION OF ALL UNDERGROUND CONSTRUCTION IN THE AREA OF THE PROJECT.

THE CONTRACTOR SHALL CONDUCT TEST PITS TO VERIFY THE LOCATIONS OF UNDERGROUND UTILITIES WHERE POTENTIAL CONFLICTS MAY OCCUR OR WHERE DISCREPANCIES ARE PRESENT BETWEEN THE PLAN AND UNDERGROUND UTILITY MARK-OUTS.

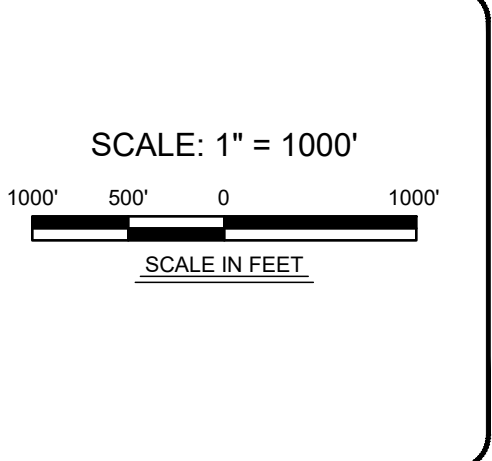
THESE TEST PITS SHALL BE IN ADDITION TO THE SPECIFIED TEST PIT LOCATIONS AS DENOTED ON THE PLANS AND SHALL NOT BE LIMITED TO EXCAVATION SOLELY BUT INCLUDE ANY ADDITIONAL MEANS TO DETERMINING THE LOCATION OF UTILITIES IN QUESTION.

CALL BEFORE YOU DIG
1-800-272-1000

TO LOCATE UNDERGROUND UTILITIES
IF YOU'RE GOING TO DIG, BLAST OR DRILL
THREE (3) WORKING DAYS NOTICE

REMEMBER
IT'S THE LAW!
Dig Safely.

No.	REVISION	APPROVE	DATE
1	COUNTY PERMIT		2/13/25
2	REVISED FORMAT		2/17/25
3	COUNTY COMMENTS		4/7/25
4			
5			
6			
7			
8			
9			



JAMES DEYERLE, PE
NJ LICENSE #24GE06090400

Professional Services

450 DAVIS DRIVE, PLYMOUTH MEETING, PA 19462
OFFICE NUMBER: 484-344-2161

1 SOUTH JERSEY PLACE, ATLANTIC CITY, NJ 08401
TELEPHONE: (800) 561-4000 FAX: 856-852-2371

PROPOSED 16" STEEL GAS LINE
PERMIT DRAWINGS
WATERFORD DIVISION

16" WOODBURY LINE REPLACEMENT - PHASE 2
TRAFFIC CONTROL PLAN

WASHINGTON TWP				NEW JERSEY
DRAWN BY	BL	DATE	4/7/2025	PLATE MAP
CHECKED BY	RA	SCALE	1" = 1,000'	WORK ORDER
APPROVED BY	JD	SHEET	17 OF 18	SHEET NUMBER

MULTIPLE
5165539
PD-TCP3